



**SPECIAL OFFERS  
INSIDE!**



# SERVICES & SUPPLIES

Evans Landscaping Catalog

513.271.1119  
[evanslandscaping.com](http://evanslandscaping.com)



# TABLE OF CONTENTS

A LETTER FROM THE EVANS TEAM	2
PEOPLE POWER	3
RECYCLING & CONCRETE CRUSHING	4
ENVIRONMENTAL IMPACT	5
SOIL & ADDITIVES	6-7
BULK MULCH & BAGGED MULCH	8-9
SAND & GRAVEL	10
DECORATIVE GRAVEL	11
LANDSCAPING MATERIAL	12-13
DEMOLITION & RECYCLING	14
LANDSCAPING & LANDSCAPING SERVICES	15
SLINGER TRUCKS & READY MIX CONCRETE	16
DUMPING & DELIVERY	17
ROLL-OFF CONTAINERS	18
HAULING	19
TREE SPADE SERVICE	19
SALT & SNOW REMOVAL	20
FIREWOOD & FIREPLACES	20
EQUIPMENT RENTALS	22-26
STONERWORKS	28-29
SPECIAL OFFERS & COUPONS	30-31
LOCATIONS & SOCIAL MEDIA	32



## A Letter from Our President, Mr. Evans

As Evans Landscaping approaches nearly its 45th year in business serving our community, all of us here at Evans are excited to help you and your neighbors with all of your landscaping needs this year. We provide the widest array of quality products and services in the greater Cincinnati and Dayton, and want to make your next project a success. In all we do, we try to think how it will benefit our community and our planet.

As a teenager in the 1970s, I began building this business on the core values of hard work and a relentless commitment to quality products and customer service. We believe that Evans embodies the American Dream – the notion that together we can achieve anything we desire through nothing more than old-fashioned hard work and doing the right thing. After all these years, Evans remains an industry leader because of loyal customers like you, and the best employees in town. Together we have slowly clawed success out of literal dirt, grime, and mud – one backbreaking day after another. Evans would not be what it is today without your support, and for that I sincerely thank you.

We are proud to employ nearly 300 people who are able to support their families and contribute to the local economy. Many of our employees have been with Evans for several decades. Now, it is one of my greatest joys to watch their kids grow up and have their own successes, as I watch my own work in the business. This is our life's work.

This is a time like no other in our business. As many of you are aware, Evans has been the subject of negative press coverage over the past

couple years, in addition to the struggles we have all endured given the COVID-19 pandemic. Even still, Evans continues to thrive despite these challenges. We are a family-owned company that has weathered good times and bad, ups and downs, and everything in between. As my father always said, "When the going gets tough, the tough get going." We did not lay off any employees during COVID-19, and in fact invested heavily in the future of our business with new equipment, trucks, and technology that is more environmentally friendly and improves our customers' experience, all while getting the job done more efficiently.

While our roots are in landscaping, we would also love to help you with stone, hauling, gravel, ready-mix concrete, clearing, hydroseeding, tree transplanting, firewood, excavating, demolition, dumpsters, and recycling. Whether you are a homeowner, builder, or contractor, you can rest assured that the Evans team of experts can assist you with all of your project needs. Our employees have over 1,000 years of combined experience, and we're always looking to add more smiling faces to our team. Please visit our website to see available positions and more information about who we are and what we do.

Again, I want to personally thank all of our customers and employees for your continued loyalty and hard work. We look forward to serving the community for generations to come. Remember, shop local!

Douglas Evans  
President, Evans Landscaping

# PEOPLE POWER

Evans is a family company. We're also a company of families. If you call us or come by one of our facilities, chances are you'll speak with one of these folks. We just thought you'd like to know a little bit about them.



**DOUG EVANS**  
(513) 271-1119

Doug is our founder and not surprisingly has the most tenure, at over 40 years. He does a little bit of everything from supporting Evans and enjoys spending time with his three children.



**JIM BAILEY**  
(513) 623-1010

Even after 31 years, Jim, our VP, still gets a kick out of working as our Chief Demolition and Excavation Project Manager and Estimator. When he's not spending time with wife Mary and their three children, he'd rather be fishing or outdoors.



**JAKE MEAGHER**  
(513) 623-1030

As our Landscape Department Manager, he keeps the crews running according to plan each day. After 27 years, he's got it down to a science. He works 24 hours a day running all of our snow removal services. For relaxation, Jake, his wife Mary and their four kids retreat to the family farm.



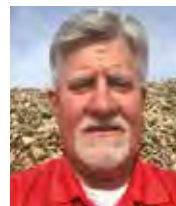
**REECE EVANS**

The youngest son of Doug, Reece is working in the field and learning the business from the ground up. He is a proud Turpin High School graduate, playing varsity football and setting records during his time there.



**DERRICK MOORE**  
(513) 678-9589

Derrick has been working for Evans for almost 15 years and is currently our Field Supervisor. In his free time he enjoys spending time with his wife and two children, and bowling.



**BERNIE ROBBEN**  
(513) 831-4152

Sales & Plant Manager for Evans Gravel, Inc. After 45 years in the aggregate industry, he still enjoys learning. He enjoys turning raw materials into the finished products used everyday for construction & home projects. In his spare time, he enjoys being with his wife of 41 years, Patty, his six children and their spouses, and especially their 13 grandchildren.



**ADAM CLIFTON**  
(513) 678-0493

Adam is a Project Manager and has been with Evans for 20 years. He loves coaching youth sports, the outdoors, and spending time with his wife Kristen and their three children.



**LUIS ARMANDO**

Luis has been working with Evans for 10+ years. He manages our topsoil and stoneworks operations. Luis spends his free time with his two wonderful children.



**JASON COOPER**  
(513) 683-8883

As the Manager of our Loveland store, Jason provides excellent customer service and oversees daily operations. Jason enjoys spending free time with his wife, Jessica, their two children, and their dogs. His hobbies include playing golf, softball, and watching local sports.



**JONATHAN JOHN**  
(513) 271-1119

Better known as Jon John around the office, he has over 30 years of dispatching experience and has been with Evans for over 10 years assisting in material sales as well. In his free time, he enjoys bowling and coaching youth sports.



**NATE JANCSICS**  
(513) 623-1017

Nate is our Landscape Project Manager with 12 years of experience in the Landscape/Hardscape industry. He enjoys transforming outdoor spaces from beginning to end. When not at work, Nate spends time with his wife Tara and three daughters (oldest, Averi, twins, Grace, and Navy). He also enjoys spending his free time golfing, sporting clays, and doing anything outdoors.

Looking for a great and rewarding career? Evans Landscaping is always ready to add talented individuals to our growing and dedicated team. Please call our office at (513) 271-1119 to inquire.

# RECYCLING & CONCRETE CRUSHING

## RECYCLING

Here at Evans, we pride ourselves on being good stewards of Planet Earth so that future generations can enjoy it too. Our commitment to making the world a greener place dates back to our humble beginnings when we started recycling yard waste, which helps to keep organic matter out of landfills. Now, Evans recycles everything from yard waste to construction and demolition debris. For example, many of our logs end up in your fine furniture and firewood to heat homes. What remains is turned into beautiful hardwood mulch, which reduces our carbon footprint and yours alike. We even recycle concrete. In fact, over 90% of the material we remove from job sites is recycled back into future products so you can rest assured that when you hire Evans we are doing our part to reduce waste. Recently, we have invested in cleaner technology and more environmentally-friendly machines and equipment that use less fuel and consume less electric. Even our headquarters building is powered in part by solar panels. We are proud to have been a part of solar field projects in our region and are always looking for ways to help create renewable energy and reduce waste. Evans will continue to invest in reusable and recyclable systems and strive to create a more sustainable future. Please join us in our mission!



## CONCRETE CRUSHING

Who would have thought that concrete could be recycled? At Evans, we are always looking for new ways to recycle and reuse materials. We have invested in state-of-the-art machinery that removes rebar, trash, wood, and other undesirable materials from concrete, and then crushes and screens the concrete into different sizes that can be used as a cost-effective alternative to gravel and new concrete. The benefits of crushing concrete include conserving natural resources as compared to mining (recycling one ton of cement can save 1,360 gallons of water), reducing pollution from transport to landfills and dumps, reduces the costs of transporting materials, saving landfill space – all while creating jobs.



# ENVIRONMENTAL IMPACT



Evans is proud to have been an early adopter of solar energy – even before it was popular! The roof of our headquarters building features a full solar array, which helps to power our entire team. We also installed solar panels on one of our satellite locations. This reduced our utility bills, and more importantly, reduced our carbon footprint. Recently, Evans has been fortunate to assist in the installation of one of Ohio’s first large-scale solar farms, situated on more than 2,500 acres in Brown County. As part of this project, Evans planted over 5,000 trees and shrubs to beautify the neighborhood. We even recycled thousands of pallets from the project that were used to transport the panels. Evans could not be more proud to have played a role in bringing clean, sustainable power to tens of thousands in southern Ohio, as well as jobs in renewable energy.



# SOIL & ADDITIVES

## TOPSOIL

It all begins with the dirt. And at Evans, we know about dirt! Our topsoil is top-notch. We have soil amendments that you can add based upon your specific needs. Choose from topsoil, manure, mushroom compost, leaf compost, peat moss or pine fines. We also have a special mix just for gardens: Supersoil. Not sure what you need? Just ask! Our team is here to help.

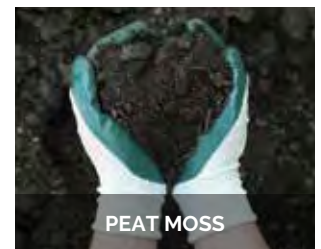
All of our topsoil is covered, dry, shredded and screened. It's available for pick-up or delivery, and we'll be happy to do all of the dirty work for you. Just ask, and for that perfectly manicured look, we'll send a slinger truck or blower truck to your home to place the soil for you.

		Quantity	Price Per Cubic Yard
<b>Shredded &amp; Screened Topsoil</b>	Fertile dark loam, great for all purposes Unshredded topsoil \$1.00 less per yard (For large orders, please call.)	1 yd	<b>\$47</b>
		2 - 3 yds	<b>\$42</b>
		4 - 9 yds	<b>\$37</b>
		10 - 19 yds	<b>\$35</b>
		20+ yds	<b>\$33</b>
<b>Supersoil</b>	A blend of topsoil, regrow, peat moss, aged manure, and sand	1 - 9 yds	<b>\$48</b>
		10+ yds	<b>\$42</b>
<b>Perennial Mix</b>	Leaf compost, mushroom compost, Michigan peat, sphagnum peat, and pine fines	1 - 9 yds	<b>\$63</b>
		10+ yds	<b>\$57</b>
<b>Fill Dirt*</b>	Soil with some rocks, sticks, and root	1 - 9 yds	<b>\$25</b>
		10 - 19 yds	<b>\$23</b>
		20+ yds	<b>\$21</b>
<b>Ball Mix*</b>	Sand and clay mix	1 - 9 yds	<b>\$68</b>
		10+ yds	<b>\$66</b>
<b>Clay Dirt*</b>	Compactible clay, some rocks	1 - 9 yds	<b>\$37</b>
		10 - 19 yds	<b>\$35</b>
		20+ yds	<b>\$32</b>

\*Anderson only

## BAGGED SOIL

<b>Topsoil</b>	40 lb. bag	<b>\$6.25</b>
<b>Organic Peat</b>	40 lb. bag	<b>\$6.25</b>
<b>Peat Moss (Canadian)</b>	3.8 cu. ft. bale	<b>\$24.00</b>
<b>Cow Manure</b>	40 lb. bag	<b>\$8.50</b>
<b>Potting Soil</b>	40 lb. bag	<b>\$8.50</b>
<b>Mushroom Compost</b>	30 lb. bag	<b>\$11.00</b>



# SOIL & ADDITIVES

## BULK SOIL ADDITIVES

<b>Aged Manure</b>	Mostly horse manure, aged 6-months or more	1 - 9 yds	<b>\$59</b>
		10 - 39 yds	<b>\$54</b>
<b>Organic Cow Manure</b>	Aged for 3 years. 100% organic	1 - 9 yds	<b>\$69</b>
		10 - 39 yds	<b>\$64</b>
<b>Mushroom Compost</b>	Organic compost; sterilized manure and sphagnum peat	1 - 9 yds	<b>\$59</b>
		10 - 39 yds	<b>\$54</b>
<b>Michigan Peat Moss</b>	Dark black in color	1 - 9 yds	<b>\$59</b>
		10 - 29 yds	<b>\$54</b>
<b>Leaf Compost</b>	Aged or fresh	1 - 9 yds	<b>\$59</b>
		10 - 39 yds	<b>\$54</b>
<b>Pine Fines</b>	Good for potting mixes and acid-loving plants; great as a mulch also	1 - 9 yds	<b>\$72</b>
		10 - 39 yds	<b>\$67</b>
<b>Regrow</b>	Rich organic compost made up of composted leaves, grass, and screened hardwood bark fines and mushroom compost. One of the best natural conditioners on the market.	1-9 yds	<b>\$59</b>
		10 yds or more	<b>\$54</b>
<b>Screened Sawdust*</b>	Aged or fresh. Great for horse stables	1-9 yds	<b>\$52</b>
		10 yds or more	<b>\$48</b>
		20 yd+	<b>\$42</b>
<b>Special Mixes</b>	Special mix is a combination of topsoil and one or more additives. Using a special 3-part mix further enriches the soil, promoting stronger and healthier plants Mix Ratios: 2-Part: 90% / 10% 3-Part: 80% / 10% / 10% 4-Part: 70% / 10% / 10% / 10%	2-Part	<b>\$62</b>
		3-Part	<b>\$66</b>
		4-Part	<b>\$69</b>

\*Anderson only



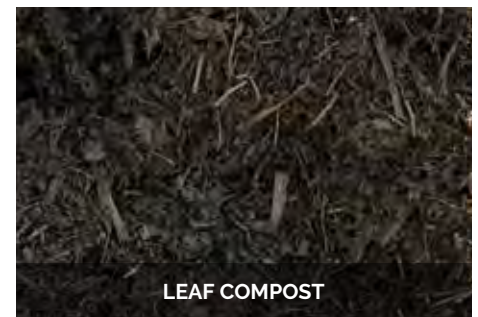
AGED MANURE



MUSHROOM COMPOST



PINE FINES



LEAF COMPOST

**MIX RATIOS** are 1st part Topsoil amount and 2nd/3rd/4th parts any bulk soil additive (manure, compost, peat moss, pine fines, regrow amounts).

# BULK MULCH

		Price
<b>Evans Dark Supreme</b>	Twice shredded and processed hardwood mulch, dark brown color. Our best-selling mulch.	<b>\$37</b>
<b>Evans Hardwood Gold</b>	Triple shredded, very fine hardwood mulch aged over 6 months, almost black in color.	<b>\$39</b>
<b>Evans Premium Ravenwood Mulch</b>	Very fine black mulch color, triple shredded.	<b>\$43</b>
<b>Evans Rosewood</b> <b>Evans Ravenwood</b> <b>Evans Sienna</b>	Reddish colored mulch, twice shredded Black colored mulch, twice shredded Brown colored mulch, twice shredded	<b>\$41</b>
<b>Fresh Red Oak</b>	All bark, twice shredded, auburn in color	<b>\$43</b>
<b>Playground Mulch</b>	Certified twice shredded, mixed woods, all natural.	<b>\$50</b>
<b>Cedar Mulch (Cypress Alternative)</b>	Eastern red cedar, pleasing aroma and all natural color.	<b>\$59</b>
<b>Wood Chips</b>	Whole trees ground up, great for pathways.	<b>\$32</b>
<b>Premium Wood Chips</b>	All wood, no bark or dirt, good when you need clean chips.	<b>\$46</b>
<b>Fert-A-Mulch</b>	A special blend of hardwood gold mulch and mushroom compost. Great soil conditioner, fertilizer and mulch in one.	<b>\$52</b>
<b>Pine Fines</b>	Great as mulch, also good for potting mixes and acid-loving plants.	<b>\$72</b>
<b>Rustic Pine Nugget Mulch</b>	Reddish brown in color. Lasts longer, Slow decomposition.	<b>\$71</b>
<b>Bulk Mini Nuggets</b>	Brown in color, approximately 3/4" in size to 1 3/4" in size	<b>\$74</b>
<b>Bulk Large Nuggets</b>	Brown in color, approximately 2" - 3" in size	<b>\$80</b>
<b>Rock Mulch</b>	1 1/2" durable rock mulch... various shades of brow	<b>\$ 190/ton</b>

Please be sure of accuracy of your order. Evans has a NO RETURN policy. Availability and prices subject to change without notice.

## Guide to Material Coverage

1 cubic yard covers approximately **160 sq. ft. 2" deep**  
**106 sq. ft. 3" deep**  
**80 sq. ft. 4" deep**

(1 cubic yard is equivalent to nine 3-cubic-foot bags,  
13.5 2-cubic-foot bags or approx. 5 wheelbarrows)

Most sand/stone/gravel weighs approximately 2800 lbs./yd.

Most topsoil/special mix weighs approximately 2000 lbs./yd. (ton)

Most mulch weighs approximately 700 lbs./yd.

## MULCH

Nothing says spring like the aroma of fresh mulch! Here at Evans, we have a huge selection of mulch. You want it, we have it! Black, dark brown, red, gold, auburn, cedar, cypress or hardwood. Get it by the bag or bulk, and it's available for pick-up or delivery. We'll even do the work for you. Let our express mulch blowers do the heavy lifting, saving you time and muscle strain. We also have pine straw and mulch for your playground or dog run.

# BAGGED MULCH

		Qty.	Bag Size	Price
<b>Evans Dark Supreme</b>	Twice shredded and processed hardwood mulch, very dark brown color. Our best-selling mulch.	Any	2 cu.ft.	<b>\$4.55</b>
<b>Evans Hardwood Gold</b>	Triple shredded, very fine hardwood mulch, aged over 6 months, almost black in color.	Any	2 cu.ft.	<b>\$5.55</b>
<b>Evans Colored Mulch</b>	Rosewood (Red), Ravenwood (Black), Sienna (Brown)	Any	2 cu.ft.	<b>\$5.35</b>
<b>Evans Premium Ravenwood</b>	Triple shredded, Black in color	Any	2 cu.ft.	<b>\$ 6.00</b>
<b>All Bark Cypress A</b>	Orange in color. Stringy, shredded. Just the bark from cypress log.	Any	3 cu.ft.	<b>\$ 18.00</b>
<b>Landscape Cypress</b>	Orange in color. Whole cypress logs ground up.	Any	2 cu.ft.	<b>\$7.75</b>
<b>All Bark Western Red Cedar</b>	Bark only, looks similar to all bark cypress.	Any	3 cu.ft.	<b>\$10.75</b>
<b>Eastern Red Cedar</b>	Whole cedar logs Ground up/aromatic	Any	2 cu. ft.	<b>\$6.75</b>
<b>Pine Nuggets</b>	Brown in color, 2" to 3" in size	Any	2 cu.ft.	<b>\$7.75</b>
<b>Pine Mini-Nuggets</b>	Brown in color, approximately ¾" in size to 1 ¾" in size	Any	2 cu.ft.	<b>\$7.75</b>
<b>Pine Bark Mulch</b>	Brown in color, approximately ½" in size	Any	2 cu.ft.	<b>\$7.75</b>
<b>Pine Straw</b>	Clean, hand baled, all-natural pine needles. Coverage - 50 sq. ft. 3" deep per bale.	1-19 Bales	4-5 cu.ft. bale	<b>\$13.50</b>
<b>Cocoa Mulch</b>	Cocoa bean shells straight from Hershey Chocolate Factory.	Any	2 cu.ft.	<b>\$31.00 per bag</b>

To help you estimate how much mulch you need,  
and to order online, visit [www.evanslandscaping.com](http://www.evanslandscaping.com)



**MULCH MATCH  
GUARANTEE\***

FIND A LOWER PRICE  
AND WE'LL MATCH IT



# SAND & GRAVEL

## SAND

Please call for special pricing on large orders of sand or gravel.

1 - 4 Yards 5+ Yards

<b>Fine Sand</b>	For use under pool liners, sand boxes, and masonry brick walls	<b>\$51</b>	<b>\$50</b>
<b>Coarse Sand</b>	For paver leveling, concrete mix, sand boxes, and stone walls	<b>\$42</b>	<b>\$41</b>
<b>White Sand</b>	Great for sand boxes, volleyball courts, and golf courses. Sold by the ton.	<b>\$135/ton</b>	<b>\$130/ton</b>

## GRAVEL

Call for Slinger services rates. Sold by the 5-gallon bucket – \$5.00 (BYOB)

1 - 4 Yards 5+ Yards

<b>3/8" Pea Gravel (#8)</b>	(Round) or fractured	<b>\$44</b>	<b>\$42</b>
<b>1" Washed Gravel (#57)</b>	(Round) or fractured	<b>\$44</b>	<b>\$42</b>
<b>Small Creek Gravel</b>	1" to 3" flat & round gravel	<b>\$60</b>	<b>\$58</b>
<b>Large Creek Gravel</b>	Mixture of 3" to 12" flat & round gravel, not washed	<b>\$60</b>	<b>\$58</b>
<b>Class C Fill</b>	Mixture of small 3/8" gravel & sand, for fill	<b>\$44</b>	<b>\$42</b>
<b>Bank Run*</b>	Mixture of larger rocks, dirt, and sand	<b>\$44</b>	<b>\$42</b>
<b>#9's Limestone 1/8"</b>	No dust, walking path stone	<b>\$68</b>	<b>\$66</b>
<b>1/2" Chipped w/ Dust</b>	Limestone screenings, leveling base	<b>\$77</b>	<b>\$70</b>
<b>1/2" Chipped No Dust</b>	For pathways and top dressing on driveways	<b>\$75</b>	<b>\$70</b>
<b>411 Crushed Limestone</b>	For driveways and brick paver base, 1" & down with dust	<b>\$56</b>	<b>\$54</b>
<b>304 Crushed Limestone</b>	For driveways and brick paver base, 1 1/2" & down with dust	<b>\$56</b>	<b>\$54</b>
<b>1" Limestone (#57)</b>	(Chipped) For drainage, no dust	<b>\$56</b>	<b>\$54</b>
<b>2-3" Limestone (#4)</b>	For basing in new driveways	<b>\$56</b>	<b>\$54</b>
<b>3-4" Limestone (#2)</b>	For basing in new driveways	<b>\$56</b>	<b>\$54</b>
<b>Limestone</b>	(Rip-Rap) For erosion control <b>Type D: 3" - 9"</b> <b>Type C: 6" - 18"</b> <b>Type B: 12" - 24"</b> <b>Type A: 18" - 30"</b>	<b>\$85</b> <b>\$95</b> <b>\$109</b> <b>\$113</b>	<b>\$83</b> <b>\$91</b> <b>\$107</b> <b>\$111</b>
<b>B-19*</b>	Crushed, oversized natural gravel 2" & down with dust	<b>\$4*</b>	<b>\$44</b>
<b>Crushed Concrete</b>	304 1 1/2" & down with dust #2's 3-4" without dust 3-4" with dust 4-7" oversized without dust	<b>\$42</b> <b>\$42</b> <b>\$42</b> <b>\$42</b>	<b>\$38</b> <b>\$38</b> <b>\$38</b> <b>\$38</b>

Gravel sold by size only, not by shape or color.

\*Anderson store only.



FINE SAND



WHITE SAND



#57 LIMESTONE



3-4" LIMESTONE



1/2" CHIPPED NO DUST



1" WASHED GRAVEL



LARGE CREEK GRAVEL

# DECORATIVE GRAVEL

## DECORATIVE GRAVEL

Sold by the 5-gallon bucket – \$15 (BYOB) or we have buckets available for \$7

		Price per ton
<b>Rainbow Rock</b> 3/8", 1", 2-3"	White rock with rainbow finish	<b>\$320</b>
<b>Chattanooga Gravel</b> 3/8", 1", 2-3"	Autumn brown color; 1/2" great for driveways and pathways; good for landscaping	<b>\$315</b>
<b>Brick Chips* – 1/2"</b>	Great for pathways and around landscaping; red in color	<b>\$285</b>
<b>Crushed Brick* – 1"</b>	Crushed; red in color	<b>\$285</b>
<b>Red Lava Rock* – 1/2"</b>	Porous rock; great for landscaping or your grill	<b>\$425</b>
<b>Black Lava Rock* – 1/2"</b>	Porous rock; great for landscaping or your grill	<b>\$460</b>
<b>Blue Slate Chips* 2"</b>	Dark blue chips	<b>\$310</b>
<b>Buff Limestone Chips*</b> 1/2", 1", 2-3"	Buff-colored chips	<b>\$208</b>
<b>Highland County Mix</b> 1" - 4"	Brown cobbles	<b>\$103</b>



## BAGGED SAND & GRAVEL

<b>Black Lava Rock</b>	1 cu. ft.	<b>\$13.00</b>
<b>Red Lava Rock</b>	0.5 cu. ft.	<b>\$12.00</b>
<b>White Marble Chips</b>	0.5 cu. ft.	<b>\$10.00</b>
<b>Coarse Sand</b>	0.5 cu. ft.	<b>\$9.00</b>
<b>Paver Base</b>	0.5 cu. ft.	<b>\$9.00</b>
<b>Pea Gravel</b>	0.5 cu. ft.	<b>\$9.00</b>
<b>Pond Pebbles</b> 2-3" small creek	5 cu. ft.	<b>\$9.00</b>
<b>River Pebbles</b> 1" round gravel	5 cu. ft.	<b>\$9.00</b>
<b>#57 Lime</b>	0.5 cu. ft.	<b>\$9.00</b>
<b>Play Sand</b>	0.5 cu. ft.	<b>\$9.00</b>
<b>Western Sunset</b>	0.5 cu. ft.	<b>\$9.00</b>
<b>Alabama Sunset</b>	0.5 cu. ft.	<b>\$12.00</b>

## PRECAST CONCRETE STEPPING STONE

<b>12" Square</b>	Pewter	<b>\$7/each</b>
<b>12" Round</b>	Pewter	<b>\$7/each</b>
<b>16" Square</b>	Pewter	<b>\$10/each</b>
<b>24" x 24" Square</b>	Pewter	<b>\$14/each</b>

## LARGE CONCRETE "MAFIA BLOCKS"

<b>6' x 2' x 2'</b>	Approx. 3,400 lbs.	<b>\$180/each</b>
<b>4' x 2' x 2'</b>	Approx. 2,320 lbs.	<b>\$125/each</b>
<b>3' x 2' x 2'</b>	Approx. 1,720 lbs.	<b>\$85/each</b>

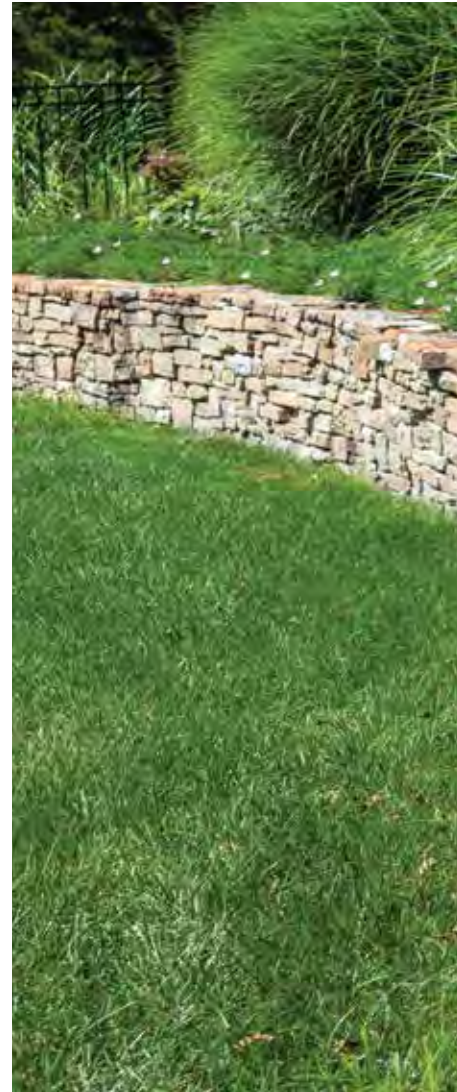
*For special sizing please call*



*\*Newtown only for pick up. Available for delivery at all locations.*

# LANDSCAPING MATERIAL

<b>Grass Seed</b>	Finelawn	5 lb.	<b>\$44</b>
	All-purpose seed for sun/partial shade	50 lb.	<b>\$195</b>
<b>Green Netting</b>	4' x 6000'	roll	<b>\$395</b>
	6' x 6000'	roll	<b>\$585</b>
	12.5' x 6000'	roll	<b>\$1,160</b>
<b>Staples – 1" x 6"</b>	Used for anchoring green netting or sod; box	1000	<b>\$75</b>
<b>Sod</b> <i>Available for delivery Pick-up at Newtown only (Forklift deliveries available for \$55.00 extra)</i>	Fescue 55" x 24" = 1 sq. yard 60 pieces per pallet = 60 sq. yard	1 - 59 pieces 60+ pieces 400+ yds	<b>\$12/pc</b> <b>\$11/pc</b> <b>\$10/Sq. Yd.</b>
<b>Straw</b>	Clean wheat straw; good for covering grass seed	bale	<b>\$13.50</b>
<b>Straw Mat</b>	Used to hold seed & fertilizer in place	8' x 112.5' roll	<b>\$95</b>
<b>Weed Block Fabric</b>	Used under mulch and gravel to keep weeds from coming up	3' x 50' roll	<b>\$28</b>
		3' x 250' roll	<b>\$122</b>
		6' x 250' roll	<b>\$180</b>
		12' x 250' roll	<b>\$315</b>
<b>Soil Stabilization Cloth Geo-Textile Fabric</b>	Heavy duty, 6 oz fabric, 5,400 SF (full roll); good underneath gravel or pavers (12½' w x 432' l)	\$0.55/ SF	<b>\$815/roll</b>
<b>Snap-Edge or Pave-Tech Edging</b>	Ridged plastic edging for pavers, etc. Straight or curved	Linear feet	<b>\$11</b>
<b>Nails – 12"</b>	200 per box	Each	<b>\$3.50</b>
		Box	<b>\$285</b>
<b>Silt Fence</b>	24" Stakes 1½" x 1½" (stake every 10')	100 ft roll	<b>\$76</b>
<b>Silt Sock/Filter Sock</b> <i>Installation available – Call for pricing</i>	8" E-tube (20 stakes/plastic topper)	200' Continuous Coil	<b>\$8/foot</b>
	12" E-tube (15 stakes/plastic topper)	120' Continuous Coil	<b>\$9/foot</b>
	20" E-tube (10 stakes/ plastic topper)	60' Continuous Coil	<b>\$12/foot</b>
<b>Orange Safety Fence</b>	4' x 100'	roll	<b>\$142</b>
<b>Hydro-Mulch</b>	6 cu. ft., 90% wood	60 lb. bag	<b>\$33</b>
	Pallet	30+ bags	<b>\$31</b>
<b>Concrete Mix</b>		80 lb bag	<b>\$13</b>
<b>Portland Cement</b>		94 lb bag	<b>\$30</b>
<b>Tackifier</b>	Used for Hydro-seed mixture	25 lb bag	<b>\$75</b>
<b>Curlex #1</b>	Erosion control matting.		
	4' x 112.5'	roll	<b>\$95</b>
	8' x 112.5'	roll	<b>\$136</b>
<b>Burlap – 3' x 250'</b>	Good for balling trees or covering plants in harsh weather	roll	<b>\$215</b>
<b>Tree Stakes – 2" Square</b>	2' - 2½' length	per stake	<b>\$10</b>
	5' - 6' length	per stake	<b>\$12</b>
<b>5-Gallon Bucket (used)</b>		each	<b>\$9</b>



PINE STRAW

# LANDSCAPING MATERIAL



<b>Catch Basin-Plastic</b>	12" x 12" x 12" with grate.	each	<b>\$ 105</b>
<b>4" Drainage Pipe</b>	Slotted or solid.	100 ft. roll	<b>\$ 100</b>
	Slotted with filter wrap.	100 ft. roll	<b>\$ 152</b>

## LANDSCAPING TIMBERS, RAILROAD TIES & TELEPHONE POLES

(All ties are 8 ½ feet long and 6" x 8" or 7" x 9" in size)

<b>Relay Railroad Ties</b> (when available)		each	<b>\$48</b>
<b>#1 Railroad Ties</b> Medium grade		1-19	<b>\$38</b>
		20+	<b>\$37</b>
<b>#2 Railroad Ties</b> Bottom grade		1-19	<b>\$34</b>
		20+	<b>\$32</b>
<b>1/2" Rebar</b>		2' length	<b>\$10/ea</b>
<b>1/2" Rebar</b>		20' length	<b>\$22/ea</b>
<b>Telephone Poles</b>		Per Foot	<b>\$13</b>

## FERTILIZER AND WEED PREVENTION

	Bag Size	Sq. Ft. Coverage	Price Per Bag
<b>Pennington UltraGreen Lawn Fertilizer</b>	14 lb.	5,000	<b>\$31</b>
<b>Pennington UltraGreen Starter Fertilizer</b>	14 lb.	5,000	<b>\$36</b>
<b>Pennington UltraGreen Weed &amp; Feed Fertilizer</b>	12.5 lb.	5,000	<b>\$38</b>
<b>Preen</b> <i>Preemergent weed control. To be applied prior to mulching.</i>	6 lb.	750 min	<b>\$29</b>
<b>Preen</b>	17.5 lb.	2,500	<b>\$45</b>
<b>Preen</b>	31 lb.	5,000	<b>\$75</b>
<b>Treflan Weed Prevention</b>	40 lb.	20,000	<b>\$76</b>
<b>All-Purpose 15-15-15 and 10-20-20 Starter fertilizer</b>	50 lb.	5,000	<b>\$41</b>



# DEMOLITION & RECYCLING

Evans Demolition crushes the competition! We have specialized in demolition for over 25 years. On average, we tear down one house or building every single day of the year. Evans owns and operates all of the demolition equipment, trucks, and employs all of the manpower making it a turnkey operation. We can handle demolition jobs of any size or type including residential, commercial, swimming pools, selective, high-elevation, large & small scale, interior hand-demolitions, and other specialty work. There is no job too small - Evans services jobs ranging from sidewalks, patios, and deck removals to swimming pools, garages, and sheds.



## Ask About our Historical Items for Sale

- Hand-Hewn Timbers
- Wrought Iron
- Granite Cobblestones
- Old Bricks
- Architectural Stone
- Other Collectibles



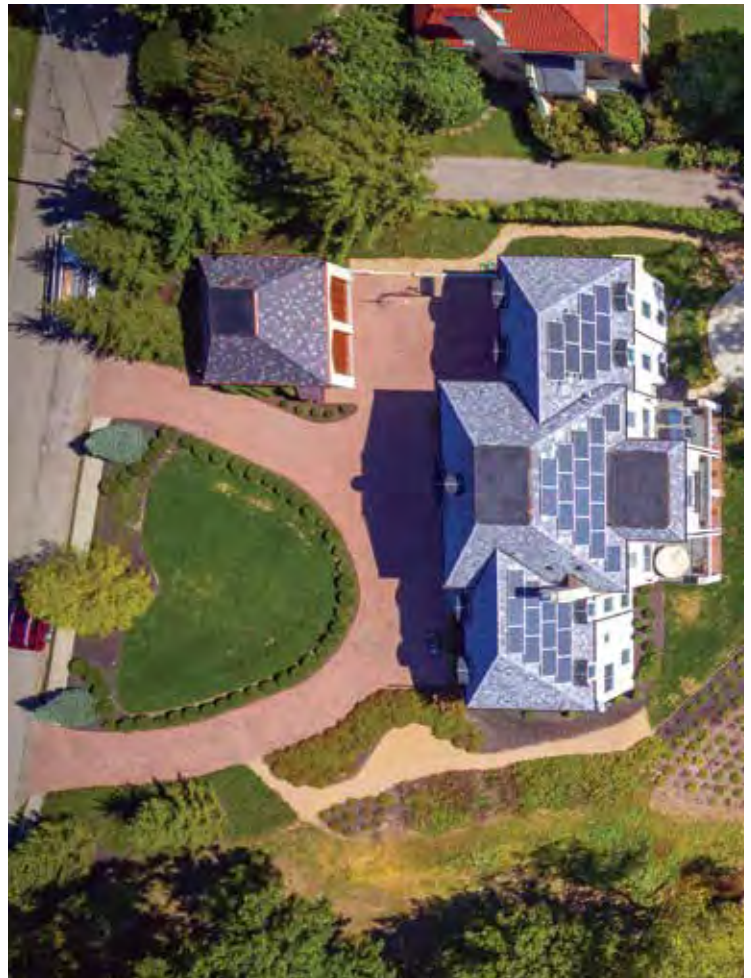
*\*\*While supplies last, call today for inventory\*\**

# LANDSCAPING & INSTALL SERVICES

## LANDSCAPING

There's never been a better time to invest in your property. Let the experts at Evans help you take care of your next landscaping project. We've been helping our customers achieve landscaping excellence since 1975. From retaining walls to landscape beds to patios, to outdoor living spaces complete with fireplaces, Evans can do it all. Need a privacy fence? What about a few larger trees for instant shade in that special spot? Evans can install 30-foot trees, and we have the best selection of stones, rocks and pavers in town.

Remember, the job isn't complete until it looks great! Our landscaping crews can place your mulch quickly and efficiently in every nook and cranny, saving you time and energy. If you're a do-it-yourselfer, we can also help you with landscaping supplies (we have quite a list). Either way, give us a call for a free estimate.



# SLINGER TRUCKS & READY MIX CONCRETE



## SLINGER TRUCKS

Our Slinger Service is great for those hard-to-reach areas. We can sling soil, sand and gravel. We highly recommend this for filling a basement, crawl space, foundation or any tight area. Our trucks are equipped with a 20-foot conveyor and can sling material an additional 20-30 feet.



# DUMPING & DELIVERY

## DUMPING AND RECYCLING

We accept public dumping for any yard waste and solid fill. This includes grass clippings, leaves, tree branches, logs, dirt, concrete, blacktop and rocks. Most items can be used in our composting process. Materials for dumping are limited to yard waste and fill. No appliances, garbage, or hazardous materials.

*Dumping fees are for the Anderson location only. Additional fees may apply at the Loveland location.*

Vehicle Size	Yard Waste	Clean Fill	Clean Concrete	Large/Dirty Concrete	Construction	Roofing & Contaminated/Non-Recyclable C&D	Large Logs & Stumps
Car	\$55	\$55	\$60	\$70	\$780	\$120	—
Loaded Pick-up	\$85	\$70	\$85	\$100	\$140	\$200	\$150
Pick-up with Sides	\$95	\$80	\$95	\$110	\$175	\$225	\$170
Loaded One Ton	\$100	\$95	\$100	\$135	\$189	\$275	\$225
Single Axle	\$125	\$125	\$135	\$195	\$310	\$395	\$275
Tandem Axle (25 yd max)	\$195	\$195	\$200	\$245	\$425 <i>(25 yd max)</i>	\$745	\$340
Multi-Axle (30 yd max)	\$225	\$215	\$215	\$295	\$505 <i>(30 yd max)</i>	\$880	\$375
Dump Trailer	\$250	\$235	\$235	\$375	\$590	\$1,010	\$405

*Large concrete pieces and/or excessive rebar will be charged at our sole discretion. All prices are subject to change based on availability.*

### Dumping:

Dumping clean fill dirt all day at Anderson **\$1,395**  
Call - Five Truck Maximum, each additional truck **\$315**

Manure **\$18**  
*Truck or Trailer*

Tires, Mattresses, & Box Springs **\$37/each**

## DELIVERY & ADDITIONAL CHARGES

### Delivery Fee

Single axles in Greater Cincinnati & Tri-State area **\$100**  
Tandem axles in Greater Cincinnati & Tri-State area **\$125**

Tailgating Fee **\$145**

Split Dump Loads **\$30**

### Additional Delivery Fee

For Tri-Axles, Quads, Blower Trucks, Slinger Trucks, Dump Trailers, or Semis **Call for rates outside of Cincinnati**

Weekend Delivery Surcharge **\$25**

Weight Tickets, Certified Scales **\$50**  
*(Newtown, Loveland, and Anderson)*

*Fuel surcharges may apply.*

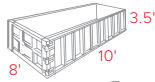


# ROLL-OFF CONTAINERS

Evans can help with all of your waste removal needs! We have 10-yard, 20-yard and 30-yard containers. We'll deliver the box and you can fill it with yard waste, dirt, rocks, concrete, blacktop, roofing material, construction or household debris and we'll take it away.

## 10 Cubic Yard Container

10' x 8' x 3.5'



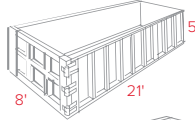
## 20 Cubic Yard Container

21' x 8' x 3.5'



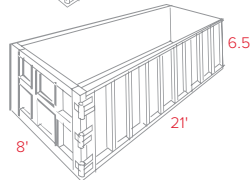
## 30 Cubic Yard Container

21' x 8' x 5'



## 40 Cubic Yard Container

21' x 8' x 6.5'



## ROLL-OFF CONTAINERS

Don't forget about our Roll-off waste removal service. We have 10-yard, 20-yard, 30-yard and 40-yard containers for all of your waste removal needs. We drop off the box; you can fill it with yard waste, dirt, rocks, concrete, blacktop, roofing material, construction debris or household debris. All prices are per box. Please call for more details.

	Material	Price Includes	Price
10 yard	A. Brush, Stumps, Clean Solid Fill	7 Tons	\$340
	B. Construction Debris, Asphalt, Concrete	7 Tons	\$455
	C. Roofing Material	7 Tons	\$570
	D. Sanitary Debris, Household Trash, Furniture, Carpet	7 Tons	\$625
20 yard	A. Brush, Stumps, Clean Solid Fill	11 Tons	\$415
	B. Construction Debris, Asphalt, Concrete	11 Tons	\$515
	C. Roofing Material	11 Tons	\$635
	D. Sanitary Debris, Household Trash, Furniture, Carpet	11 Tons	\$865
30 yard	A. Brush, Stumps, Clean Solid Fill	11 Tons	\$445
	B. Construction Debris, Asphalt, Concrete	11 Tons	\$595
	C. Roofing Material	11 Tons	\$715
	D. Sanitary Debris, Household Trash, Furniture, Carpet	11 Tons	\$970
40 yard	A. Brush, Stumps, Clean Solid Fill	11 Tons	\$595
	B. Construction Debris, Asphalt, Concrete	11 Tons	\$800
	C. Roofing Material	11 Tons	\$815
	D. Sanitary Debris, Household Trash, Furniture, Carpet	11 Tons	\$1,255



Price includes delivery, pick-up and disposal fee. Also includes 7 day rental, \$10.00/day extra. No paint, tires, chemicals or any hazardous waste.

Containers with dirt, concrete or asphalt must be less than 1/2 full. 10 yd. containers must weigh less than 7 tons, 20, 30 & 40 yd. containers must weigh less than 11 tons.

Customer will be assessed a surcharge (\$100-\$300) for any box that is overloaded. Customer is responsible for any overweight tickets and/or damage to Evans equipment or truck. Re-spot fee of \$125 applies. Fees for double-runs apply.

\* Roofing boxes \$100 additional to construction box

\*\* Double hook/Double Run - same spot fee: additional \$50

Commercial Use Only - 60 or 70 Yard Container

# HAULING

## DELIVERY & HAULING

Truck Capacity (approx. in yards)	Mulch	Soil	Sand/Gravel	Tons
One Ton Truck	1 - 5 yds	1 - 5 yds	1 - 4 yds	4 - 5
Single Axle Truck	6 - 15 yds	6 - 10 yds	5 - 7 yds	8 - 10
Tri/Quad Truck	16 - 45 yds	11 - 20 yds	8 - 14 yds	15 - 20
Dump Trailer Truck	46 - 60 yds	21 - 25 yds	15 - 20 yds	20 - 25
Semi Walking Floor Truck	70 - 80 yds			22 - 25

Please be sure the accuracy of your order. Evans has a NO RETURN policy. Availability and prices are subject to change without notice.



# TREE SPADE SERVICE

## SUPPLY & INSTALL NEW TREES

We dig from several nurseries and have a wide selection of trees. Call Adam (513) 678-0493 for more information.

- Replacement of damaged trees
- Provide privacy and noise barriers instantly
- Increase property value immediately

## TREE TRANSPLANTING

- On or off-site relocation
- Save cost of planting new trees by relocating existing trees
- Provide instant shade on houses, decks, patios, etc.

## PRICING

- 6–12 inch caliper deciduous or evergreen trees supplied & installed with 90" spade @ \$1800-\$2800 each
- 4–6 inch caliper deciduous or evergreen trees supplied & installed with 55" spade @ \$1000-\$1800 each
- 90" spade transplanting trees @ \$300 per hour, port-to-port, with \$800 minimum per job
- 55" spade transplanting trees @ \$275 per hour, port-to-port, with \$600 minimum per job



# SALT & SNOW REMOVAL

## SALT & SNOW REMOVAL

When the grim-faced TV meteorologist predicts a howling blast of the White Death, think Evans salt and snow removal. Aside from stocking up on milk and bread, nothing gets you through a Cincinnati winter better than knowing Evans is ready for your snow emergency.

Need a bag of salt? We've got what you need, and we're ready long before the winter storms appear. Need a ton or two? Give us a call and we'll make sure you're covered. Need your parking lot plowed so your employees have no excuse for not showing up? Evans has a fleet of plows ready to transform fields of white into acres of parking. Winter in Cincinnati... we're in it together, we'll survive it together.

Questions - call Jake Meagher at (513) 623-1030.



### Salt & Deicer

**Salt for Driveways and Roadways**  
Prices based on local availability.  
Price Subject to Change.

50 lb. bag **\$ 8.50**  
Bulk, per ton **\$ 175**

**Deicer**  
Recommended for concrete  
sidewalks/driveways

50 lb. bag **\$ 20**  
Magnesium or Calcium Chloride



# FIREWOOD & FIREPLACES

Stay warm and cozy in front of a roaring fire all winter with Evans' Four Seasons Firewood Delivery Service.

We'll handle the hard work of splitting, prepping and delivery, and you can enjoy the benefits of a glowing fire on cold winter nights. Order early so you're ready for that first frosty night. We'll deliver our high quality, clean wood bundles for your fireplace, backyard fire pit, bonfire, barbecue or campfire.

Our firewood bundles are packaged in a convenient size that moves easily from your

yard or porch to the fireplace or into the back of a truck for a midwinter camping trip.

Evans Firewood is a mix of hardwoods and comes seasoned and split. A stack is 4' x 8' x 16". Let us stack your wood for \$160 per stack. Delivery charges may apply.

You can also purchase our seasoned firewood by the ton for \$195 per ton. There is a one-ton minimum. A single axle truck can hold approximately 3 – 5 tons of firewood. One ton of firewood stacks out to approximately 4' x 8' x 16".

## SEASONED & SPLIT FIREWOOD

(4' x 8' x 16" stacked)

Stack amount	Cord amount	Price
1 stack	1/3 cord	<b>\$ 210</b>
1 ton	1/2 cord	<b>\$ 195</b>
Stacking fee	per stack	<b>\$ 160</b>
Stacking fee	per ton	<b>\$ 185</b>

**FIREWOOD PINCHER** - \$75.00 for pick-up, no sides (economy wood)

## OUTDOOR FIREPLACES

Heat up your outdoor living space with an economical new fireplace that can be installed in a day, rather than weeks. Evans Stoneworks has developed a prefabricated shell made up of masonry units that fit together on site. The outside of the unit is then customized to coordinate with the style of the space, using stone, brick, or stucco. Evans Stoneworks also creates beautiful custom fireplaces to create an outdoor living space that you will enjoy for years to come.





4270 ROUND BOTTOM RD • CINCINNATI • 513-271-RENT

**ROUND BOTTOM RENTAL & SALES IS DEDICATED TO PROVIDING OUR CUSTOMERS WITH THE TOOLS AND EQUIPMENT THEY NEED FOR THEIR BUSINESS OR PROJECT.**

We rent out everything from hand-held tools to chainsaws to bobcats, as well as heavy-duty machinery such as large CAT excavators and bulldozers. We are also an authorized dealer of Husqvarna equipment, Sno-way plows and salt spreaders, SnowEx salt spreaders and Wright mowers.

From rentals to parts to service, Round Bottom Rental has you covered.

**RENTALS | EQUIPMENT | SERVICE | PROPANE TANKS FILLED**





# EQUIPMENT RENTALS



Operators available at extra charge.

Prices are per hour with a four-hour minimum, (with Evans operator). Truck rates are charged from port-to-port and include Evans drivers. Equipment rates with experienced Evans operator are charged for on-site time with an additional mobilization fee. Equipment rental is subject to 20% surcharge for weekend rental.

## TRUCKS, TRAILERS AND DUMPS

<i>(Approximate amount truck hauls)</i>	Per Hour w/ Operator
One ton (4 - 5 tons)	\$100
Single axle (8 - 10 tons)	\$105
Tri-axles (14 - 16 tons)	\$115
Multi-axle / 5+ Axle (20 - 22 tons)	\$135
Semi (tractor)	\$205
Dump trailer with tractor (23 - 25 tons)/flatbed	\$205
Walking floor trailer/35 ton drag with truck	\$225
Snow plow with pickup truck	\$200
Snow plow with 4x4, one-ton truck or single axle	\$220
CAT Off-Road Truck, 6-wheel drive	\$280
Rubber track off-road truck (12 ton)	\$280
Slinger truck (18 - 20 tons) Multi-Axle	\$190
Slinger truck (8 - 10 tons, smaller slinger) Single-Axle	\$170
Flatbed with forklift	\$245
Tree spade truck, 90" with driver and helper	\$390
Roll-off truck, single axle	\$185
Roll-off truck, quad-axle	\$200
Sweeper truck	\$215
Hydroseeder (4,000 & 3,000 gal)	\$330
Hydroseeder (1,800 gal)	\$265
Hydroseeder / CAT 55 challenger on Rubber Tracks	\$305



# EQUIPMENT RENTALS



This pricing is for base rental charge only. Other fees and charges may apply and will be calculated at the time of rental. You must provide proof of renter damage and liability coverage. Does not include fuel usage or delivery fees. Daily, weekly, and monthly rental does NOT include operator.



## SKIDSTEER MINI LOADERS

	Daily (8 hrs)	Weekly (40 hrs)	4-week (160 hrs)
Ditch Witch SK600	\$ 175	\$ 700	\$ 2,100
Ditch Witch SK800	\$ 195	\$ 800	\$ 2,400
Ditch Witch SK3000	\$ 350	\$ 1,200	\$ 3,600
CAT 236 D Rubber Tire	\$ 225	\$ 750	\$ 2,250
CAT 259 D or Kubota SVL75 Rubber Tracks	\$ 350	\$ 1,350	\$ 3,600
CAT 289 D or Kubota SVL90 Rubber Tracks	\$ 420	\$ 1,500	\$ 4,500

Rental includes bucket or pallet forks. Optional attachments: grapple buckets, angle brooms, pick-up brooms, tiller, augers, concrete bucket, breaker hammer, fecon grinder, soil conditioner, stump grinder or tree spade.

## MINI EXCAVATORS

Can dig approximately 8-12' deep with rubber tracks & blade, 12", 18", 24" tooth buckets, & 36" smooth grading buckets.

Kubota KX008 Rubber Tracks	\$ 215	\$ 750	\$ 2,200
CAT 301.7D Rubber Tracks	\$ 250	\$ 850	\$ 2,450
CAT 303.5E or Kubota U35 Rubber Tracks	\$ 290	\$ 1,050	\$ 3,000
CAT 305.5E or Kubota KX040 Rubber Tracks	\$ 335	\$ 1,150	\$ 3,500

Rental includes mechanical quick coupler, 2' tooth bucket, 36" smooth grading bucket. Optional attachment: 12" trenching bucket.



## BACKHOES AND EXCAVATORS

CAT 308 or Kubota KX080 with Rubber Tracks	\$ 550	\$ 1,750	\$ 5,500
CAT 315CL w/ Bucket and Thumb	\$ 700	\$ 2,250	\$ 6,200
CAT 316E	\$ 750	\$ 2,500	\$ 7,200
CAT 320DL w/ Bucket	\$ 800	\$ 3,000	\$ 8,750
CAT 322 CL Long Reach	\$ 1,600	\$ 4,800	\$ 15,000
CAT 330DL w/ Bucket and Thumb	\$ 1,400	\$ 4,200	\$ 12,600
CAT 330BL w/Concrete Hammer or Cruncher	\$3,600	\$ 10,800	\$ 32,900
CAT 336E w/ Bucket and Thumb	\$ 1,500	\$ 5,000	\$ 14,000
CAT 345DL w/Bucket and Thumb	\$ 1,775	\$ 6,000	\$ 16,500
KOMATSU PC 600	\$3,200	\$6,600	\$ 19,800

Available attachments: Buckets, grapples, breaker hammers, multi-processors, mechanical densifiers, compactor wheels, hydraulic plates, concrete slab buckets, or fecon grinder.



## DOZERS

CAT D-3 with 6 Way Blade	\$ 625	\$ 1,875	\$ 5,400
CAT D-4 with 6 Way Blade	\$ 625	\$ 1,875	\$ 5,400
CAT D5G XL or D5M LGP with 6-Way Blade	\$ 700	\$ 2,100	\$ 6,100
CAT D-6N with 6 Way Blade	\$ 1,000	\$ 3,300	\$ 9,000
CAT D6T	\$ 1,000	\$ 3,300	\$ 9,000
CAT D6K LGP or CAT 6T LGP (with optional TOPCON 3D MC2 GPS)	\$ 1,000	\$ 3,300	\$ 9,000
CAT D8R	\$ 1,000	\$ 4,500	\$ 13,500



# EQUIPMENT RENTALS



Operators available at extra charge.



## ULTRA HIGH DEMOLITION EXCAVATORS

	Daily (8 hrs)	Weekly (40 hrs)	4-week (160 hrs)
CAT 330 D 75' reach	\$ 2,400	\$ 7,200	\$ 21,600
CAT 345 C 95' reach	\$ 3,600	\$ 10,800	\$ 32,500

## WHEEL LOADERS/ TRACK LOADERS

YANMAR V8	\$ 300	\$ 900	\$ 2,700
CAT 924K (2-5 yd. bucket) Wheel	\$ 775	\$ 2,300	\$ 6,500
CAT 928G (3-5 yd. bucket) Wheel	\$ 800	\$ 2,400	\$ 7,000
CAT 980 G (15 yd. bucket) Wheel	\$ 1,500	\$ 4,500	\$ 14,000
CAT 953 D (3-4 yd. bucket) Track	\$ 1,100	\$ 3,000	\$ 9,900
CAT 963 C (3-5 yd. bucket) Track	\$ 1,100	\$ 3,000	\$ 9,900

## COMPACTORS/ROLLERS

CAT 214 E Small Double Drum Roller	\$ 300	\$ 900	\$ 2,700
CAT CB-24B Smooth Double Drum	\$ 350	\$ 1,000	\$ 3,000
CAT 433 E Smooth Drum or Sheepfoot	\$ 550	\$ 1,650	\$ 4,500
CAT 563 D Smooth Drum or Sheepfoot	\$ 650	\$ 2,000	\$ 5,500



## OFF-ROAD TRUCKS

CAT 725	\$ 1,200	\$ 4,000	\$ 11,000
Hydrema 912HM & KOMATSU CD 60R	\$ 900	\$ 2,700	\$ 7,000
KOMATSU CD 110R Rubber Tracks	\$ 1,500	\$ 4,500	\$ 13,500
MOROOKA MST 2200VD Rubber Tracks	\$ 1,500	\$ 4,500	\$ 13,500

## TRACTORS

CAT Challenger 35, 45, 55 <i>w/ optional attachments: Northwest Tillers and Rome Construction Discs</i>	\$ 900	\$ 3,600	\$ 10,800
KUBOTA BX2670 w/ belly mower, Loader 4x4	\$ 200	\$ 650	\$ 1,900
KUBOTA MX 5100 w/ loader 4x4	\$ 300	\$ 1,000	\$ 3,000
KUBOTA M5-111D	\$ 625	\$ 1,875	\$ 5,500
KUBOTA 9540 4x4 w/ cab <i>w/ optional attachments: Grader Boxes and Bush Hogs</i>	\$ 550	\$ 1,750	\$ 5,250
KUBOTA M7-171 4x4 w/cab, w/loader	\$ 900	\$ 3,600	\$ 10,800



# EQUIPMENT RENTALS



## HYDRO-SEEDERS/STRAW BLOWER

	Daily (8 hrs)	Weekly (40 hrs)	4-week (160 hrs)
Hydro-Seeder – Pull Behind Trailer (1200 Gal)	\$ 700	\$ 2,100	\$ 6,530
Hydro-Seeder Truck w/ operator (3000 gal, 200 ft. hose) Port to Port	\$ 2,200	Call	Call
Hydro-Seeder Truck w/ operator (1800 gal, 200 ft. hose) Port to Port	\$ 1,800	Call	Call
Hydro-Seeder on CAT 55 Challenger with Rubber Tracks (200 ft. hose)	\$ 1,550	\$ 5,450	\$ 16,000
Finn B70 Straw Blower (Pull Behind)	\$ 190	\$ 600	\$ 1,800

## MAN/BOOM LIFTS/TELEHANDLER

Scissor Lift	\$ 180	\$ 500	\$ 1,500
Telehandler Gehl RS 5-19 5000 w/ Forks & Bucket	\$ 350	\$ 1,200	\$ 3,600
Telehandler CAT 1255 w/ Forks & Bucket	\$ 600	\$ 1,800	\$ 5,000
Boomlift Genie Z45/25J w/ jib	\$ 375	\$ 1,200	\$ 3,500
Boomlift Genie 62/40 w/ jib	\$ 525	\$ 1,600	\$ 4,700
Boomlift Genie SZ-125C w/ jib	\$ 1,300	\$ 3,900	\$ 12,000

## WATER TRUCKS

Peterbilt 4,000 Gallon	\$ 800	\$ 2,075	\$ 5,200
------------------------	--------	----------	----------

## BROOMS

Pelican Sweeper Truck w/ operator	\$ 900	Call	Call
Pelican Sweeper Truck w/out operator	\$ 600	\$ 2,000	\$ 6,000



## HYDROSEEDING

After clearing the land, we often follow with efficient, erosion control, professional hydroseeding – making sure the new site comes up lush and green.



# EQUIPMENT RENTALS



*Operators available at extra charge.*

## MISCELLANEOUS EQUIPMENT

	Daily <i>(8 hrs)</i>	Weekly <i>(40 hrs)</i>	4-week <i>(160 hrs)</i>
Wrecking Balls 2,200 - 3,600 lbs.	\$ 100	\$ 375	\$ 1,050
Conex Office Job Boxes 20' (Transport not included)	-	\$ 500	\$ 1,500
Conex Office Job Boxes 40' (Transport not included)	-	\$ 900	\$ 2,700
Bedding Boxes 7 - 9 c.y.	\$ 105	\$ 375	\$ 1,050
Concrete Crane Buckets 1 + 1.5 c.y.	\$ 105	\$ 375	\$ 1,050
Peterson 1000 HP Horizontal Grinder On Tracks	Call For Pricing		
Service Truck Fully Equipped With Mechanic (Port to Port)	\$155 <i>(Hourly With Operator)</i>		
Light Plant Diesel (Four 1000-Watt Bulbs)	\$ 125	\$ 400	\$ 1,200
Sullair 185 Pull Behind Air Compressor	\$135	\$400	\$ 1,300
Terex Portable, Large, Impact Crusher On Tracks	Call For Pricing		
Dutchman Tree Spade 36" w/Skid Steer Loader	\$ 900	\$ 2,750	\$8,500
Dutchman Tree Spade 50" w/Skid Steer Loader	\$ 1,000	\$ 3,000	\$8,750
Arrow Board	\$ 80	\$ 275	\$ 600



# Start Your Evans Career

1. Competitive Wages
2. Paid Vacation & Holidays
3. Health Insurance w/ HSA option
4. 401k Retirement Plan w/ Match
5. Dental, Vision, & Life Insurance
6. Employee Discounts
7. Overtime Available
8. Home Every Night/Housing Available
9. Full-time or Part-time

For more information visit:  
[www.EvansLandscaping.com](http://www.EvansLandscaping.com)



Some of the available opportunities

1. Landscaping
2. Trucking
3. Mechanics
4. Equipment Operation
5. Gravel Mining
6. So Much More!

PRODUCING  
& MANUFACTURING

# Natural Stone



**STONE WORKS**

[www.evansstoneworks.com](http://www.evansstoneworks.com) • (513) 271-1119



8361 BROADWELL RD • CINCINNATI, 45244



## NATURAL WALL AND PATIO BUILDING STONE

Sold per ton, unless noted	Palletized Wall Stone	Palletized 8" Cut Wall Stone	Palletized Stepping Stones	Palletized Flagstone	Palletized Slabs/ Outcroppings
Highland Buff	\$ 380	\$ 435	\$ 435		\$ 335
Lynchburg	\$ 380	\$ 435	\$ 435		\$ 335
Indiana Gray	\$ 380	\$ 435	\$ 435		\$ 335
Indiana Buff	\$ 430	\$ 500	\$ 435		\$ 440
Field Stone	\$ 380	\$ 435	\$ 435		\$ 335
Ohio Blue	\$ 460		\$ 505	\$ 670	
Pennsylvania Blue				\$ 735	
Pennsylvania Lilac	\$ 545			\$ 755	
Pennsylvania Field	\$ 545				
Wisconsin Chilton		\$ 515	\$ 545	\$ 820	
Wisconsin Fond Du Lac		\$ 515	\$ 545	\$ 820	
Tennessee Crab Orchard		\$ 515	\$ 545	\$ 545	
Tennessee Gray		\$ 515	\$ 545	\$ 545	

All palletized products are sold per ton. Each pallet weighs approximately 1 to 1½ tons. Coverage varies for each type of stone. A deposit is required for all pallets.



### Tumbled Dimensional Retaining Wall Stone

Guillotine split pieces 8" depth vary in length, sawn top and bottom and tumbled. Palletized in 3", 6" or 9" per thickness. Please specify. 1.5 tons per pallet. Coverage per ton approximately 25 sq. ft.

Indiana Gray	\$560.00 per ton
Indiana Buff	\$640.00 per ton
Kentucky Fieldstone	\$560.00 per ton

### CUT STEPS

	3' x 18" x 6" each	4' x 18" x 6" each
Indiana Gray*	\$ 275	\$ 290
Indiana Buff	\$ 360	\$ 395
Kentucky Fieldstone	\$ 275	\$ 290
Wisconsin Chilton	\$ 335	\$ 395
Wisconsin Fond Du Lac	\$ 335	\$ 395
Tennessee Crab Orchard	\$ 275	\$ 290
Tennessee Gray	\$ 275	\$ 290

\*Indiana Gray also available in 5' and 6' cut steps. Please call for pricing.



## PALLETIZED LANDSCAPE

**Boulders** (sold per lb.)

### “One-man boulders”

River Jax	<b>\$0.37</b>
Tennessee River Rounds	<b>\$0.88</b>
Ohio Creekstone Flats	<b>\$0.37</b>
Granite Boulders	<b>\$0.48</b>

Call for quantity discounts.

## PATTERNED FLAGSTONE

Pennsylvania Bluestone\*\* **\$10.75 sq. ft.**



## LANDSCAPE ACCENTS

### Granite Cobblestones

(sold per each)

Squares (4.5" x 4.5")	<b>Black</b>	<b>\$ 7.75 ea.</b>
	<b>Gray</b>	<b>\$ 5.00 ea.</b>
	<b>Pink</b> (while supplies last)	<b>\$ 7.75 ea.</b>
Rectangles (4.5" x 4.5" x 9")	<b>Black</b>	<b>\$ 11.00 ea.</b>
	<b>Gray</b>	<b>\$ 9.00 ea.</b>
	<b>Pink</b>	<b>\$ 10.00 ea.</b>
Jumbo (10.5" x 7.5" x 4")	<b>Gray</b>	<b>\$ 10.00 ea.</b>
	<b>Square</b>	<b>\$ 5.00 ea.</b>
		<b>Rectangle</b>
Old Granite Cobblestones	<b>Square*</b>	<b>\$ 6.75 ea.</b>
	<b>Rectangle</b>	<b>\$ 7.75 ea.</b>
Indiana Buff (while supplies last)	<b>Square*</b>	<b>\$ 545/ton</b>
	<b>Rectangle*</b>	<b>\$ 520/ton</b>
Indiana Gray	<b>Square*</b>	<b>\$ 6.75 ea.</b>
	<b>Rectangle*</b>	<b>\$ 7.75 ea.</b>
Kentucky Fieldstone	<b>Square*</b>	<b>\$ 545/ton</b>
	<b>Rectangle*</b>	<b>\$ 300/ton</b>
Brown/Blue Mix	<b>Rectangle*</b>	<b>\$ 7.75 ea.</b>

\*Sold by ton; full pallet only.

## NATURAL BUILDING STONE MATERIALS

Building Stone	Full Veneer per ton	Thin Veneer Flats	Thin Veneer Corners
Fieldstone**	<b>\$ 390</b>	<b>\$ 19 sq. ft.</b>	<b>\$ 23 ln. ft.</b>
Ohio Blue**		<b>\$ 22 sq. ft.</b>	<b>\$ 28 ln. ft.</b>
Highland**	<b>\$ 390</b>	<b>\$ 19 sq. ft.</b>	<b>\$ 23 ln. ft.</b>
Indiana Gray**	<b>\$ 390</b>	<b>\$ 19 sq. ft.</b>	<b>\$ 20 ln. ft.</b>
Indiana Buff**	<b>\$ 445</b>	<b>\$ 22 sq. ft.</b>	<b>\$ 23 ln. ft.</b>

Other veneer products available upon request. Call for pricing.

\*\* Product available at Newtown store only.

## USED BRICK

Full Pallet, each brick: **\$ 1.75**

Full Pallets or more: **\$150**



# SPECIAL OFFERS



**10% OFF**  
EQUIPMENT RENTAL

Not valid with any other coupon or previous purchase. Limit one coupon per offer. Retail coupon. Expires 12/31/2026



**\$100 OFF**

**HUSQVARNA TRACTORS & ZERO TURN MOWERS**  
*(In-stock unit only)*

Not valid with any other coupon or previous purchase. Limit one coupon per offer. Retail coupon. Expires 12/31/2026



**10% OFF**  
MOWER SERVICE

Not valid with any other coupon or previous purchase. Limit one coupon per offer. Retail coupon. Expires 12/31/2026



**10% OFF**  
MOWER PICK-UP & DELIVERY

Not valid with any other coupon or previous purchase. Limit one coupon per offer. Retail coupon. Expires 12/31/2026



# SPECIAL OFFERS



**\$75 OFF**  
Truck Treespade  
or Bobcat Treespade Service

Coupon must be presented when placing order! Coupon good 4/1/2026-12/31/2026. Not valid with any other coupon or previous purchase. Limit one coupon with this offer.



PR50TS

**\$40 OFF**  
Slinger Truck Delivery or  
Roll-Off Recycling Box

Coupon must be presented when placing order! Coupon good 4/1/2026-12/31/2026. Not valid with any other coupon or previous purchase. Limit one coupon with this offer.



PR35SR

**\$35 OFF**  
Delivery of 20 Yards or  
More of Topsoil

Coupon must be presented when placing order! Coupon good 4/1/2026-12/31/2026. Not valid with any other coupon or previous purchase. Limit one coupon with this offer.



PR35T

**\$20 OFF**  
Delivery

Coupon must be presented when placing order! Coupon good 4/1/2026-12/31/2026. Not valid with any other coupon or previous purchase. Limit one coupon with this offer.



PR15D

**\$20 OFF**  
Any Bulk Topsoil or  
Supersoil Purchase

Coupon must be presented when placing order! Coupon good 4/1/2026-12/31/2026. Not valid with any other coupon or previous purchase. Limit one coupon with this offer.



PR10T

**\$20 OFF**  
Any Gravel Delivery

Coupon must be presented when placing order! Coupon good 4/1/2026-12/31/2026. Not valid with any other coupon or previous purchase. Limit one coupon with this offer.



PR10G

**\$20 OFF**  
Any Pallet of Flatrock

Coupon must be presented when placing order! Coupon good 4/1/2026-12/31/2026. Not valid with any other coupon or previous purchase. Limit one coupon with this offer.



PR10R

**FREE**  
Buy 5 Bags (2 cu. ft.) of Dark  
Supreme Mulch, Get One Bag FREE

Coupon must be presented when placing order! Coupon good 4/1/2026-12/31/2026. Not valid with any other coupon or previous purchase. Limit one coupon with this offer.



PR5B

**FREE**  
Buy 4 Yards of Dark Supreme  
Mulch, Get One Yard FREE

Coupon must be presented when placing order! Coupon good 4/1/2026-12/31/2026. Not valid with any other coupon or previous purchase. Limit one coupon with this offer.



PR1F

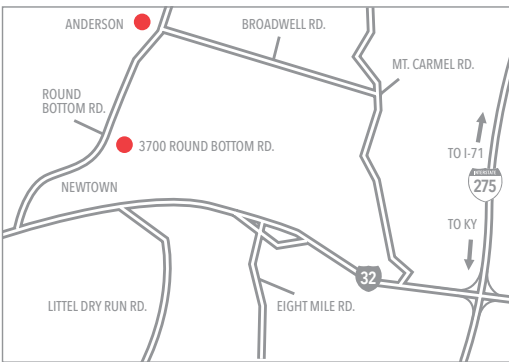




4229 Round Bottom Road  
Cincinnati, Ohio 45244

## DOING THE DIRTY WORK SINCE 1975.

LANDSCAPING | SUPPLIES | SITE DEVELOPMENT | TOPSOIL | MULCH | DEMOLITION | RECYCLING



### NEWTOWN, OHIO

3700 Round Bottom Rd.  
**(513) 271-1119**  
Fax (513) 271-1055

#### Hours:

Mon. – Fri. 7am – 5pm  
Sat. 7am – 3pm  
Sun. 10am – 3pm



### LOVELAND, OHIO

9700 East Kemper Rd.  
**(513) 271-1119**  
Fax (513) 683-8891

#### Hours:

Mon. – Fri. 8am – 5pm  
Sat. 8am – 12pm  
Sun. CLOSED



We deliver to all of Ohio, Kentucky  
and Indiana. Call for a quote.

*Seasonal Hours Are Subject to Change*

Find us on   

Connect with us for exclusive offers and landscaping tips.

 @EvansLandscaping

 @Evans\_Group

 @Evans\_Group

[www.EvansLandscaping.com](http://www.EvansLandscaping.com)

*Spring Through Fall Extended Hours Available - Please Call*