



**MULCH MATCH
GUARANTEE***

FIND A LOWER PRICE
AND WE'LL MATCH IT



**SPECIAL OFFERS
INSIDE**

**SERVICES
& SUPPLIES**

(513) 271-1119
www.evanslandscaping.com

TABLE OF CONTENTS

PEOPLE POWER

A LETTER FROM THE EVANS TEAM	2
PEOPLE POWER	3
RECYCLING & CONCRETE CRUSHING	4
ENVIRONMENTAL IMPACT	5
SOIL & ADDITIVES	6-7
BULK MULCH & BAGGED MULCH	8-9
SAND & GRAVEL	10
DECORATIVE GRAVEL	11
LANDSCAPING MATERIAL	12-13
DEMOLITION & RECYCLING	14
LANDSCAPING & EXPRESS BLOWER	15
SLINGER TRUCKS & READY MIX CONCRETE	16
DUMPING & DELIVERY	17
ROLL-OFF CONTAINERS	18
HAULING	19
TREE SPADE SERVICE	19
SALT & SNOW REMOVAL	20
FIREWOOD & FIREPLACES	20
EQUIPMENT RENTALS	22-26
STONeworks	28-29
SPECIAL OFFERS & COUPONS	30-31
LOCATIONS & SOCIAL MEDIA	32



A Letter from Our President, Mr. Evans

As Evans Landscaping approaches nearly its 45th year in business serving our community, all of us here at Evans are excited to help you and your neighbors with all of your landscaping needs this year. We provide the widest array of quality products and services in the greater Cincinnati and Dayton, and want to make your next project a success. In all we do, we try to think how it will benefit our community and our planet.

As a teenager in the 1970s, I began building this business on the core values of hard work and a relentless commitment to quality products and customer service. We believe that Evans embodies the American Dream – the notion that together we can achieve anything we desire through nothing more than old-fashioned hard work and doing the right thing. After all these years, Evans remains an industry leader because of loyal customers like you, and the best employees in town. Together we have slowly clawed success out of literal dirt, grime, and mud – one backbreaking day after another. Evans would not be what it is today without your support, and for that I sincerely thank you.

We are proud to employ nearly 300 people who are able to support their families and contribute to the local economy. Many of our employees have been with Evans for several decades. Now, it is one of my greatest joys to watch their kids grow up and have their own successes, as I watch my own work in the business. This is our life's work.

This is a time like no other in our business. As many of you are aware, Evans has been the subject of negative press coverage over the past

couple years, in addition to the struggles we have all endured given the COVID-19 pandemic. Even still, Evans continues to thrive despite these challenges. We are a family-owned company that has weathered good times and bad, ups and downs, and everything in between. As my father always said, "When the going gets tough, the tough get going." We did not lay off any employees during COVID-19, and in fact invested heavily in the future of our business with new equipment, trucks, and technology that is more environmentally friendly and improves our customers' experience, all while getting the job done more efficiently.

While our roots are in landscaping, we would also love to help you with stone, hauling, gravel, ready-mix concrete, clearing, hydroseeding, tree transplanting, firewood, excavating, demolition, dumpsters, and recycling. Whether you are a homeowner, builder, or contractor, you can rest assured that the Evans team of experts can assist you with all of your project needs. Our employees have over 1,000 years of combined experience, and we're always looking to add more smiling faces to our team. Please visit our website to see available positions and more information about who we are and what we do.

Again, I want to personally thank all of our customers and employees for your continued loyalty and hard work. We look forward to serving the community for generations to come. Remember, shop local!

Douglas Evans
President, Evans Landscaping

Evans is a family company. We're also a company of families. If you call us or come by one of our facilities, chances are you'll speak with one of these folks. We just thought you'd like to know a little bit about them.



ZACH PETERSON
(513) 623-1010
Zach began working in the field during his college summers nearly 20 years ago, and now serves as our General Counsel and Chief Financial Officer. Outside of work, Zach is a law professor and enjoys spending time outdoors with his family.



JIM BAILEY
(513) 623-1010
Even after 31 years, Jim, our VP, still gets a kick out of working as our Chief Demolition and Excavation Project Manager and Estimator. When he's not spending time with wife Mary and their three children, he'd rather be fishing or outdoors.



KIRSTEN FRANXMAN
(513) 271-1119
Kirsten is the Office Manager and has been with Evans for 6 years. She ensures that the daily operations of the office run smoothly and assists with special projects that improve the functionality of the workplace. In her free time, Kirsten enjoys spending time with family and friends at the lake.



LANG EVANS
Lang is a Project Manager and supervisor. He oversees the many production operations that occur daily here at our facility. Lang also works in the field on various projects, managing the complex challenges and requirements that are vital in guaranteeing a top quality finished product.



JAKE MEAGHER
(513) 623-1030
As our Landscape Department Manager, he keeps the crews running according to plan each day. After 27 years, he's got it down to a science. He works 24 hours a day—running all of our snow removal services. For relaxation, Jake, his wife Mary and their four kids retreat to the family farm.



DERRICK MOORE
(513) 678-9589
Derrick has been working for Evans for almost 15 years and is currently our Field Supervisor. In his free time he enjoys spending time with his wife and two children, and bowling.



DAVE HABIG
(513) 623-1003
After 30 years, Dave, our Landscape Project Manager, has seen it all and can figure out what it should cost. Coach Dave loves community sports: just ask wife Jennifer and their two children.



TOM HINKSTON
(513) 271-1119
Tom is a Supervisor, keeping numerous daily operations running at an efficient pace. He handles the needs of Evans' customers, provides scheduling and communication to our crew on the road, and maintains productive workflow and service out of the front office.



DAVE RUDOLPH
(513) 272-5169
Manager of the Evans Newtown store, Dave (also known as Rudy) is pretty much on call 24/7 to service our customers needs. When he's not working, he enjoys fishing, golfing, or just spending time with his wife, Robin, family, friends, and three golden retrievers.



ADAM CLIFTON
(513) 678-0493
Adam is a Project Manager and has been with Evans for 20 years. He loves coaching youth sports, the outdoors, and spending time with his wife Kristen and their three children.



LUIS ARMANDO
Luis has been working with Evans for 10+ years. He manages our topsoil and stoneworks operations. Luis spends his free time with his two wonderful children.



BERNIE ROBBEN
(513) 831-4152
Sales & Plant Manager for Evans Gravel, Inc. After 45 years in the aggregate industry, he still enjoys learning. He enjoys turning raw materials into the finished products used everyday for construction & home projects. In his spare time, he enjoys being with his wife of 41 years, Patty, his six children and their spouses, and especially their 13 grandchildren.



BARRY LUPPERT
(513) 616-5346
Barry manages Round Bottom Rental, our neighboring rental business that provides the most comprehensive range of equipment needed to get the job done. Barry offers his knowledge and expertise to our customers as they begin their projects. In his free time, he enjoys the company of his wife and grandkids. Barry has been with Evans Landscaping for 25 years.



JONATHAN JOHN
(513) 271-1119
Better known as Jon John around the office, he has over 30 years of dispatching experience and has been with Evans for over 10 years assisting in material sales as well. In his free time, he enjoys bowling and coaching youth sports.



REECE EVANS
The youngest son of Doug, Reece is working in the field and learning the business from the ground up. He is a proud Turpin High School graduate, playing varsity football and setting records during his time there.



SCOTT COMPTON
(513) 678-7704
As our Demolition Project Manager & Estimator, Scott enjoys placing our customer's goals first and always guarantees excellent service. When he's not serving our customers, or our country as a guardsman, he enjoys going to Disney World with his wife, Kaci, and their three children.



JASON COOPER
(513) 683-8883
As the Manager of our Loveland store, Jason provides excellent customer service and oversees daily operations. Jason enjoys spending free time with his wife, Jessica, their two children, and their dogs. His hobbies include playing golf, softball, and watching local sports.



DOUG EVANS
(513) 271-1119
Doug is our founder and not surprisingly has the most tenure, at over 40 years. He does a little bit of everything supporting Evans and enjoys spending time with his three children.

Looking for a great and rewarding career? Evans Landscaping is always ready to add talented individuals to our growing and dedicated team. Please call our office at (513) 271-1119 to inquire.



RECYCLING & CONCRETE CRUSHING

RECYCLING

Here at Evans, we pride ourselves on being good stewards of Planet Earth so that future generations can enjoy it too. Our commitment to making the world a greener place dates back to our humble beginnings when we started recycling yard waste, which helps to keep organic matter out of landfills. Now, Evans recycles everything from yard waste to construction and demolition debris. For example, many of our logs end up in your fine furniture and firewood to heat homes. What remains is turned into beautiful hardwood mulch, which reduces our carbon footprint and yours alike. We even recycle concrete. In fact, over 90% of the material we remove from job sites is recycled back into future products so you can rest assured that when you hire Evans we are doing our part to reduce waste. Recently, we have invested in cleaner technology and more environmentally-friendly machines and equipment that use less fuel and consume less electric. Even our headquarters building is powered in part by solar panels. We are proud to have been a part of solar field projects in our region and are always looking for ways to help create renewable energy and reduce waste. Evans will continue to invest in reusable and recyclable systems and strive to create a more sustainable future. Please join us in our mission!



CONCRETE CRUSHING

Who would have thought that concrete could be recycled? At Evans, we are always looking for new ways to recycle and reuse materials. We have invested in state-of-the-art machinery that removes rebar, trash, wood, and other undesirable materials from concrete, and then crushes and screens the concrete into different sizes that can be used as a cost-effective alternative to gravel and new concrete. The benefits of crushing concrete include conserving natural resources as compared to mining (recycling one ton of cement can save 1,360 gallons of water), reducing pollution from transport to landfills and dumps, reduces the costs of transporting materials, saving landfill space – all while creating jobs.



ENVIRONMENTAL IMPACT

Evans is proud to have been an early adopter of solar energy – even before it was popular! The roof of our headquarters building features a full solar array, which helps to power our entire team. We also installed solar panels on one of our satellite locations. This reduced our utility bills, and more importantly, reduced our carbon footprint. Recently, Evans has been fortunate to assist in the installation of one of Ohio's first large-scale solar farms, situated on more than 2,500 acres in Brown County. As part of this project, Evans planted over 5,000 trees and shrubs to beautify the neighborhood. We even recycled thousands of pallets from the project that were used to transport the panels. Evans could not be more proud to have played a role in bringing clean, sustainable power to tens of thousands in southern Ohio, as well as jobs in renewable energy.



SOIL & ADDITIVES

TOPSOIL

It all begins with the dirt. And at Evans, we know about dirt! Our topsoil is top-notch. We have soil amendments that you can add based upon your specific needs. Choose from topsoil, manure, mushroom compost, leaf compost, peat moss or pine fines. We also have a special mix just for gardens: Supersoil. Not sure what you need? Just ask! Our team is here to help.

All of our topsoil is covered, dry, shredded and screened. It's available for pick-up or delivery, and we'll be happy to do all of the dirty work for you. Just ask, and for that perfectly manicured look, we'll send a slinger truck or blower truck to your home to place the soil for you.

		Quantity	Price Per Cubic Yard
Shredded & Screened Topsoil	Fertile dark loam, great for all purposes Unshredded topsoil \$1.00 less per yard (For large orders, please call.)	1 yd	\$40
		2 - 3 yds	\$35
		4 - 9 yds	\$32
		10 - 19 yds	\$29
		20+ yds	\$28
Supersoil	A blend of topsoil, regrow, peat moss, aged manure, and sand	1 - 9 yds	\$42
		10+ yds	\$36
Perennial Mix	Leaf compost, mushroom compost, Michigan peat, sphagnum peat, and pine fines	1 - 9 yds	\$54
		10+ yds	\$49
Fill Dirt*	Soil with some rocks, sticks, and root	1 - 9 yds	\$21
		10 - 19 yds	\$19
		20+ yds	\$17
Ball Mix*	Sand and clay mix	1 - 9 yds	\$60
		10+ yds	\$58
Clay Dirt*	Compactible clay, some rocks	1 - 9 yds	\$30
		10 - 19 yds	\$28
		20+ yds	\$25

*Anderson only

BAGGED SOIL

Topsoil	40 lb. bag	\$5.00
Organic Peat	40 lb. bag	\$5.00
Peat Moss (Canadian)	3.8 cu. ft. bale	\$20.00
Cow Manure	40 lb. bag	\$6.50
Potting Soil	40 lb. bag	\$6.50
Mushroom Compost	30 lb. bag	\$9.00



SOIL & ADDITIVES

BULK SOIL ADDITIVES

Aged Manure	Mostly horse manure, aged 6-months or more	1 - 9 yds 10 - 39 yds	\$50 \$46
Mushroom Compost	Organic compost; sterilized manure and sphag-num peat	1 - 9 yds 10 - 39 yds	\$50 \$46
Michigan Peat Moss	Dark black in color	1 - 9 yds 10 - 29 yds	\$50 \$46
Leaf Compost	Aged or fresh	1 - 9 yds 10 - 39 yds	\$50 \$46
Pine Fines	Good for potting mixes and acid-loving plants; great as a mulch also	1 - 9 yds 10 - 39 yds	\$60 \$58
Regrow	Rich organic compost made up of composted leaves, grass, and screened hardwood bark fines and mushroom compost. One of the best natural conditioners on the market.	1-9 yds 10 yds or more	\$50 \$47
Screened Sawdust*	Aged or fresh. Great for horse stables	1-9 yds 10 yds or more	\$44 \$41
Special Mixes	Special mix is a combination of topsoil and one or more additives. Using a special 3-part mix further enriches the soil, promoting stronger and healthier plants Mix Ratios: 2-Part: 90% / 10% 3-Part: 80% / 10% / 10% 4-Part: 70% / 10% / 10% / 10%	2-Part 3-Part 4-Part	\$52 \$56 \$60

*Anderson only



Aged Manure



MIX RATIOS are 1st part Topsoil amount and 2nd/3rd/4th parts any bulk soil additive (manure, compost, peat moss, pine fines, regrow amounts).

BULK MULCH

		Price
Evans Dark Supreme	Twice shredded and processed hardwood mulch, dark brown color. Our best-selling mulch.	\$33
Evans Hardwood Gold	Triple shredded, very fine hardwood mulch aged over 6 months, almost black in color.	\$35
Evans Premium Ravenwood Mulch	Very fine black mulch color, triple shredded.	\$40
Evans Rosewood Evans Ravenwood Evans Sienna	Reddish colored mulch, twice shredded Black colored mulch, twice shredded Brown colored mulch, twice shredded	\$37
Fresh Red Oak	All bark, twice shredded, auburn in color	\$35
Rustic Pine Nugget Mulch	Reddish brown in color. Lasts longer, Slow decomposition.	\$56
Playground Mulch	Certified twice shredded, mixed woods, all natural.	\$46
Cedar Mulch (Cypress Alternative)	Eastern red cedar, pleasing aroma and all natural color.	\$51
Wood Chips	Whole trees ground up, great for pathways.	\$30
Premium Wood Chips	All wood, no bark or dirt, good when you need clean chips.	\$38
Fert-A-Mulch	A special blend of hardwood gold mulch and mushroom compost. Great soil conditioner, fertilizer and mulch in one.	\$44
Rock Mulch	1 ½" durable rock much	\$ 150/ton

Please be sure of accuracy of your order. Evans has a NO RETURN policy.
Availability and prices subject to change without notice.

**Some restrictions apply. See website for details.*

Guide to Material Coverage

1 cubic yard covers approximately

160 sq. ft. 2" deep
106 sq. ft. 3" deep
80 sq. ft. 4" deep

(1 cubic yard is equivalent to nine 3-cubic-foot bags, 13.5 2-cubic-foot bags or approx. 5 wheelbarrows)

Most sand/stone/gravel weighs approximately 2800 lbs./yd.

Most topsoil/special mix weighs approximately 2000 lbs./yd. (ton)

Most mulch weighs approximately 700 lbs./yd.

MULCH

Nothing says spring like the aroma of fresh mulch! Here at Evans, we have a huge selection of mulch. You want it, we have it! Black, dark brown, red, gold, auburn, cedar, cypress or hardwood. Get it by the bag or bulk, and it's available for pick-up or delivery. We'll even do the work for you. Let our express mulch blowers do the heavy lifting, saving you time and muscle strain. We also have pine straw and mulch for your playground or dog run.

BAGGED MULCH

		Qty.	Bag Size	Price
Evans Dark Supreme	Twice shredded and processed hardwood mulch, very dark brown color. Our best-selling mulch.	Any	2 cu.ft.	\$4.25
Evans Hardwood Gold	Triple shredded, very fine hardwood mulch, aged over 6 months, almost black in color.	Any	2 cu.ft.	\$5.25
Evans Colored Mulch	Rosewood (Red), Ravenwood (Black), Sienna (Brown)	Any	2 cu.ft.	\$5.00
Evans Premium Ravenwood	Triple shredded, Black in color	Any	2 cu.ft.	\$ 5.50
All Bark Cypress A	Orange in color. Stringy, shredded. Just the bark from cypress log.	Any	3 cu.ft.	\$ 15.95
Landscape Cypress	Orange in color. Whole cypress logs ground up.	Any	2 cu.ft.	\$6.25
All Bark Western Red Cedar	Bark only, looks similar to all bark cypress.	Any	3 cu.ft.	\$9.50
Eastern Red Cedar	Whole cedar logs Ground up/aromatic	Any	2 cu. ft.	\$5.50
Pine Nuggets	Brown in color, 2" to 3" in size	Any	2 cu.ft.	\$6.25
Pine Mini-Nuggets	Brown in color, approximately ¾" in size	Any	2 cu.ft.	\$6.25
Pine Bark Mulch	Brown in color, approximately ½" in size	Any	2 cu.ft.	\$6.25
Pine Straw	Clean, hand baled, all-natural pine needles. Coverage - 50 sq. ft. 3" deep per bale.	1-19 Bales	4-5 cu.ft. bale	\$12.50
Cocoa Mulch	Cocoa bean shells straight from Hershey Chocolate Factory.	Any	2 cu.ft.	\$15.75

To help you estimate how much mulch you need,
and to order online, visit www.evanslandscaping.com



**MULCH MATCH
GUARANTEE***

FIND A LOWER PRICE
AND WE'LL MATCH IT



SAND & GRAVEL

SAND

Please call for special pricing on large orders of sand or gravel.

		1 - 4 Yards	5+ Yards
Fine Sand	For use under pool liners, sand boxes, and masonry brick walls	\$43	\$42
Coarse Sand	For paver leveling, concrete mix, sand boxes, and stone walls	\$34	\$32
White Sand	Great for sand boxes, volleyball courts, and golf courses. <i>Sold by the ton.</i>	\$99/ton	\$95/ton

GRAVEL

Call for Slinger services rates. Sold by the 5-gallon bucket – \$5.00 (BYOB)

		1 - 4 Yards	5+ Yards
3/8 " Pea Gravel (#8)	(Round) or fractured	\$36	\$34
1" Washed Gravel (#57)	(Round) or fractured	\$36	\$34
Small Creek Gravel	1" to 3" flat & round gravel	\$48	\$46
Large Creek Gravel	Mixture of 3" to 12" flat & round gravel, not washed	\$48	\$46
Class C Fill	Mixture of small 3/8" gravel & sand, for fill	\$36	\$32
Bank Run*	Mixture of larger rocks, dirt, and sand	\$36	\$32
#9's Limestone 1/8"	No dust, walking path stone	\$48	\$46
1/2" Chipped w/ Dust	Limestone screenings, leveling base	\$54	\$52
1/2" Chipped No Dust	For pathways and top dressing on driveways	\$52	\$50
411 Crushed Limestone	For driveways and brick paver base, 1" & down with dust	\$38	\$37
304 Crushed Limestone	For driveways and brick paver base, 1 1/2" & down with dust	\$38	\$37
1" Limestone (#57)	(Chipped) For drainage, no dust	\$38	\$37
2-3" Limestone (#4)	For basing in new driveways	\$38	\$37
3-4" Limestone (#2)	For basing in new driveways	\$38	\$37
Limestone	(Rip-Rap) For erosion control Type D: 3" - 9" Type C: 6" - 18" Type B: 12" - 24" Type A: 18" - 30"	\$58 \$66 \$76 \$78	\$56 \$64 \$74 \$76
B-19*	Crushed, oversized natural gravel 2" & down with dust	\$38	\$35
Crushed Concrete *All crushed concrete may have wood or steel contaminants	304 1 1/2" & down with dust #2's 3-4" without dust 3-4" with dust 4-7" oversized without dust	\$34 \$34 \$34 \$34	\$30 \$30 \$30 \$30

Gravel sold by size only, not by shape or color.

*Anderson store only.

DECORATIVE GRAVEL

DECORATIVE GRAVEL

Sold by the 5-gallon bucket – \$15 (BYOB)

		Price per ton
Rainbow Rock 3/8", 1", 2-3"	White rock with rainbow finish	\$245
Chattanooga Gravel 3/8", 1", 2-3"	Autumn brown color; 1/2" great for driveways and pathways; good for landscaping	\$215
Brick Chips* – 1/2"	Great for pathways and around landscaping; red in color	\$215
Crushed Brick* – 1"	Crushed; red in color	\$215
Red Lava Rock* – 1 1/2"	Porous rock; great for landscaping or your grill	\$315
Black Lava Rock* – 1 1/2"	Porous rock; great for landscaping or your grill	\$345
Blue Slate Chips* 2"	Dark blue chips	\$235
Buff Limestone Chips* 1/2", 1", 2-3"	Buff-colored chips	\$160

BAGGED SAND & GRAVEL

Black Lava Rock	1 cu. ft.	\$9.50
Red Lava Rock	0.5 cu. ft.	\$8.50
White Marble Chips	0.5 cu. ft.	\$6.50
Coarse Sand	0.5 cu. ft.	\$6.00
Paver Base	0.5 cu. ft.	\$6.00
Pea Gravel	0.5 cu. ft.	\$6.00
Pond Pebbles 2-3" small creek	0.5 cu. ft.	\$6.00
River Pebbles 1" round gravel	0.5 cu. ft.	\$6.00
#57 Lime	0.5 cu. ft.	\$6.00
Play Sand	0.5 cu. ft.	\$6.00
Western Sunset	0.5 cu. ft.	\$6.00
Alabama Sunset	0.5 cu. ft.	\$8.00

PRECAST CONCRETE STEPPING STONE

12" Square	Pewter	\$3.50/each
12" Round	Pewter	\$3.50/each
16" Square	Pewter	\$6.50/each
24" x 24" Square	Pewter	\$11.50/each

LARGE CONCRETE "MAFIA BLOCKS"

6' x 2' x 2'	Approx. 3,400 lbs.	\$75/each
4' x 2' x 2'	Approx. 2,320 lbs.	\$70/each
3' x 2' x 2'	Approx. 1,720 lbs.	\$60/each



*Newtown only for pick up. Available for delivery at all locations.

LANDSCAPING MATERIAL

Grass Seed	Finelawn All-purpose seed for sun/partial shade	5 lb. 50 lb.	\$20 \$112
Green Netting	4' x 6000' 6' x 6000' 12.5' x 6000'	roll roll roll	\$290 \$430 \$790
Staples – 1" x 6"	Used for anchoring green netting or sod; box	1000	\$55
Sod <i>Available for delivery Pick-up at Newtown only (Forklift deliveries available for \$55.00 extra)</i>	Fescue 55" x 24" = 1 sq. yard 60 pieces per pallet = 60 sq. yard	1 - 59 pieces 60+ pieces 400+ yds	\$7.50/pc \$6.50/pc \$5.25/Sq. Yd.
Straw	Clean wheat straw; good for covering grass seed	bale	\$10.50
Weed Block Fabric	Used under mulch and gravel to keep weeds from coming up	3' x 50' roll 3' x 250' roll 6' x 250' roll 12' x 250' roll	\$20 \$90 \$130 \$235
Soil Stabilization Cloth Geo-Textile Fabric	Heavy duty, 6 oz fabric, 5,400 SF (full roll); good underneath gravel or pavers (12½' w x 432' l)	\$0.40/ SF	\$630/roll
Snap-Edge or Pave-Tech Edging	Ridged plastic edging for pavers, etc. Straight or curved	Linear feet	\$6
Nails – 12"	200 per box	Each Box	\$2 \$210
Silt Fence	24" Stakes 1½" x 1½" (stake every 10')	100 ft roll	\$55
Silt Sock/Filter Sock <i>Installation available – Call for pricing</i>	8" E-tube (20 stakes/plastic topper) 12" E-tube (15 stakes/plastic topper) 20" E-tube (10 stakes/ plastic topper)	200' Continuous Coil 120' Continuous Coil 60' Continuous Coil	\$3.25/foot \$4.25/foot \$7.25/foot
Orange Safety Fence	4' x 100'	roll	\$105
Hydro-Mulch	6 cu. ft., 90% wood Pallet	60 lb. bag 30+ bags	\$23 \$21
Concrete Mix		80 lb bag	\$8.50
Portland Cement		94 lb bag	\$21
Tackifier	Used for Hydro-seed mixture	25 lb bag	\$55
Curlex #1	Erosion control matting. 4' x 112.5' 8' x 112.5'	roll roll	\$70 \$100
Burlap – 3' x 250'	Good for balling trees or covering plants in harsh weather	roll	\$170
Tree Stakes – 2" Square	2' - 2½' length 5' - 6' length	per stake per stake	\$5.25 \$7.50
5-Gallon Bucket (used)		each	\$6



LANDSCAPING MATERIAL

Catch Basin-Plastic	12" x 12" x 12" with grate.	each	\$ 79
---------------------	-----------------------------	------	-------

4" Drainage Pipe	Slotted or solid. Slotted with filter wrap.	100 ft. roll 100 ft. roll	\$ 75 \$ 110
------------------	--	------------------------------	-----------------

LANDSCAPING TIMBERS, RAILROAD TIES & TELEPHONE POLES

(All ties are 8 ½ feet long and 6" x 8" or 7" x 9" in size)

Relay Railroad Ties <i>(when available)</i>	each	\$32
--	------	------

#1 Railroad Ties <i>Medium grade</i>	1-19 20+	\$26 \$24
---	-------------	--------------

#2 Railroad Ties <i>Bottom grade</i>	1-19 20+	\$23 \$21
---	-------------	--------------

1/2" Rebar	2' length	\$5.25/ea
------------	-----------	-----------

1/2" Rebar	20' length	\$15.75/ea
------------	------------	------------

Telephone Poles	Per Foot	\$8.50
-----------------	----------	--------

FERTILIZER AND WEED PREVENTION

	Bag Size	Sq. Ft. Coverage	Price Per Bag
Pennington UltraGreen Lawn Fertilizer	14 lb.	5,000	\$21.75
Pennington UltraGreen Starter Fertilizer	14 lb.	5,000	\$26.75
Pennington UltraGreen Weed & Feed Fertilizer	12.5 lb.	5,000	\$28.75
Preen <i>Preemergent weed control. To be applied prior to mulching.</i>	6 lb.	750 min	\$20
Preen	17.5 lb.	2,500	\$34
Preen	31 lb.	5,000	\$58
Treflan Weed Prevention	40 lb.	20,000	\$59
All-Purpose 15-15-15 and 10-20-20 <i>Starter fertilizer</i>	50 lb.	5,000	\$30



DEMOLITION & RECYCLING

Evans Demolition crushes the competition! We have specialized in demolition for over 25 years. On average, we tear down one house or building every single day of the year. Evans owns and operates all of the demolition equipment, trucks, and employs all of the manpower making it a turnkey operation. We can handle demolition jobs of any size or type including residential, commercial, swimming pools, selective, high-elevation, large & small scale, interior hand-demolitions, and other specialty work. There is no job too small - Evans services jobs ranging from sidewalks, patios, and deck removals to swimming pools, garages, and sheds.



Ask About our Historical Items for Sale

- Hand-Hewn Timbers
- Wrought Iron
- Granite Cobblestones
- Old Bricks
- Architectural Stone
- Other Collectibles



LANDSCAPING & EXPRESS BLOWER

LANDSCAPING

There's never been a better time to invest in your property. Let the experts at Evans help you take care of your next landscaping project. We've been helping our customers achieve landscaping excellence since 1975. From retaining walls to landscape beds to patios, to outdoor living spaces complete with fireplaces, Evans can do it all. Need a privacy fence? What about a few larger trees for instant shade in that special spot? Evans can install 30-foot trees, and we have the best selection of stones, rocks and pavers in town.

Remember, the job isn't complete until it looks great! Our express blowers can place our mulch quickly and efficiently in every nook and cranny, saving you time and energy. If you're a do-it-yourselfer, we can also help you with landscaping supplies (we have quite a list). Either way, give us a call for a free estimate.



EXPRESS BLOWER SERVICE

Ask about our blower service and save time, money and a sore back! We can spread ten yards of mulch or more in just an hour. This service is also great for spreading topsoil and terra-seeding. **Call today.**



Express Mulch Blower Truck



SLINGER TRUCKS & READY MIX CONCRETE



SLINGER TRUCKS

Our Slinger Service is great for those hard-to-reach areas. We can sling soil, sand and gravel. We highly recommend this for filling a basement, crawl space, foundation or any tight area. Our trucks are equipped with a 20-foot conveyor and can sling material an additional 20-30 feet.



READY MIX CONCRETE

Mix	Price	Additives	
3,000	\$125 / c.y.	Bag of Cement	\$ 11 / c.y.
3,500	\$128 / c.y.	1% Accelerator	\$ 9 / c.y.
4,000	\$131 / c.y.	2% Accelerator	\$ 11 / c.y.
Class C	\$133 / c.y.	Mid Range Water Reducer	\$ 6 / c.y.
4,500	\$135 / c.y.	Fiber Mesh	\$ 10 / c.y.
5,000	\$137 / c.y.	Pea Gravel	\$ 5 / c.y.
CDF & LSM 50	\$90 / c.y.	Retarder	\$ 5 / c.y.

Additional charges may apply: Winter charge \$4 / c.y., unloading charge 5 minutes free per yard, \$2 per minute thereafter, return concrete / dirty drum charge \$50, small load fee \$60, Saturday delivery charge \$10 / c.y. additional, minimum load charge \$500.



DUMPING & DELIVERY

DUMPING AND RECYCLING

We accept public dumping for any yard waste and solid fill. This includes grass clippings, leaves, tree branches, logs, dirt, concrete, blacktop and rocks. Most items can be used in our composting process. Materials for dumping are limited to yard waste and fill. No appliances, garbage, or hazardous materials.

Dumping fees are for the Anderson location only. Additional fees may apply at the Loveland location.

Vehicle Size	Anderson Brush	Yard Waste	Clean Fill	Clean Concrete	Construction	Sanitary	Large Logs & Stumps
Car	\$20	\$35	\$30	\$35	\$45	\$70	—
Loaded Pick-up	\$20	\$50	\$45	\$50	\$85	\$130	\$70
Pick-up with Sides	\$30	\$55	\$50	\$55	\$95	\$140	\$85
Loaded One Ton	\$35	\$60	\$55	\$60	\$115	\$175	\$135
Single Axle	\$45	\$80	\$75	\$80	\$155	\$215	\$160
Tandem Axle (25 yd max)	\$55	\$135	\$130	\$135	\$290 (25 yd max)	\$520	\$190
Multi-Axle (30 yd max)	\$65	\$145	\$145	\$145	\$360 (30 yd max)	\$575	\$220
Dump Trailer	\$75	\$150	\$150	\$150	\$395	\$625	\$250

Large concrete pieces and/or excessive rebar will be charged at our sole discretion. All prices are subject to change based on availability.

Dumping:	
Dumping clean fill dirt all day at Anderson	\$850
Call - Five Truck Maximum, each additional truck	\$150
Manure	
Truck or Trailer	\$10
Tires, Mattresses, & Box Springs	\$25/each

DELIVERY & ADDITIONAL CHARGES

Delivery Fee	
Single axles in Greater Cincinnati & Tri-State area	\$65
Tandem axles in Greater Cincinnati & Tri-State area	\$95
Tailgating Fee	\$115
Split Dump Loads	\$20
Additional Delivery Fee	Call for rates outside of Cincinnati
For Tri-Axles, Quads, Blower Trucks, Slinger Trucks, Dump Trailers, or Semis	
Weekend Delivery Surcharge	\$20
Weight Tickets, Certified Scales	\$30
(Newtown, Loveland, and Anderson)	

Fuel surcharges may apply.

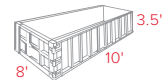


ROLL-OFF CONTAINERS

Evans can help with all of your waste removal needs! We have 10-yard, 20-yard and 30-yard containers. We'll deliver the box and you can fill it with yard waste, dirt, rocks, concrete, blacktop, roofing material, construction or household debris and we'll take it away.

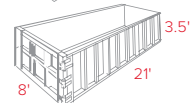
10 Cubic Yard Container

10' x 8' x 3.5'



20 Cubic Yard Container

21' x 8' x 3.5'



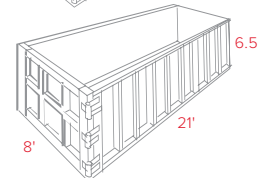
30 Cubic Yard Container

21' x 8' x 5'



40 Cubic Yard Container

21' x 8' x 6.5'



ROLL-OFF CONTAINERS

Don't forget about our Roll-off waste removal service. We have 10-yard, 20-yard, 30-yard and 40-yard containers for all of your waste removal needs. We drop off the box; you can fill it with yard waste, dirt, rocks, concrete, blacktop, roofing material, construction debris or household debris. All prices are per box. Please call for more details.

	Material	Price
10 yard	A. Brush, Stumps, Clean Solid Fill	\$260
	B. Construction Debris, Asphalt, Concrete	\$375
	C. Roofing Material	\$475
	D. Sanitary Debris, Household Trash, Furniture, Carpet	\$500
20 yard	A. Brush, Stumps, Clean Solid Fill	\$340
	B. Constructions Debris, Asphalt, Concrete	\$420
	C. Roofing Material	\$520
	D. Sanitary Debris, Household Trash, Furniture, Carpet	\$690
30 yard	A. Brush, Stumps, Clean Solid Fill	\$365
	B. Constructions Debris, Asphalt, Concrete	\$485
	C. Roofing Material	\$585
	D. Sanitary Debris, Household Trash, Furniture, Carpet	\$760
40 yard	A. Brush, Stumps, Clean Solid Fill	\$480
	B. Constructions Debris, Asphalt, Concrete	\$625
	C. Roofing Material	\$725
	D. Sanitary Debris, Household Trash, Furniture, Carpet	\$995

* Roofing boxes \$100 additional to construction box

** Double hook/Double Run – same spot fee: additional \$50



Price includes delivery, pick-up and disposal fee. Also includes 7 day rental, \$5.00/day extra. No paint, tires, chemicals or any hazardous waste.

Containers with dirt, concrete or asphalt must be less than 1/2 full. 10 yd. containers must weigh less than 8 tons, 20, 30 & 40 yd. containers must weigh less than 15 tons.

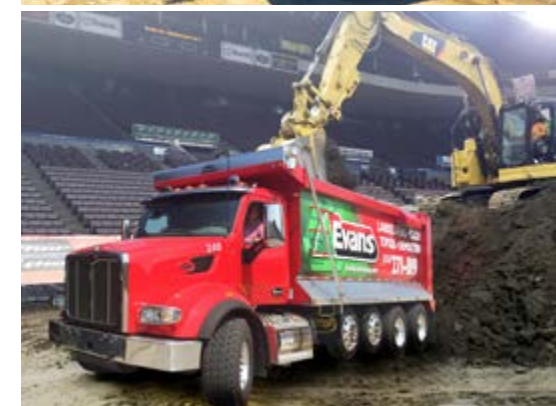
Customer will be assessed a surcharge (\$100-\$300) for any box that is overloaded. Customer is responsible for any overweight tickets and/or damage to Evans equipment or truck. Re-spot fee of \$100 applies. Fees for double-runs apply.

HAULING

DELIVERY & HAULING

Truck Capacity (approx. in yards)	Mulch	Soil	Sand/Gravel	Tons
One Ton Truck	1 - 8 yds	1 - 5 yds	1 - 4 yds	4 - 5
Single Axle Truck	9 - 20 yds	6 - 10 yds	5 - 7 yds	8 - 10
Tri/Quad Truck	21 - 45 yds	11 - 20 yds	8 - 14 yds	15 - 20
Dump Trailer Truck	46 - 60 yds	21 - 25 yds	15 - 20 yds	20 - 25
Semi Walking Floor Truck	70 - 80 yds			22 - 25

Please be sure the accuracy of your order. Evans has a NO RETURN policy. Availability and prices are subject to change without notice.



TREE SPADE SERVICE

SUPPLY & INSTALL NEW TREES

We dig from several nurseries and have a wide selection of trees. Call Adam (513) 678-0493 for more information.

- Replacement of damaged trees
- Provide privacy and noise barriers instantly
- Increase property value immediately

TREE TRANSPLANTING

- On or off-site relocation
- Save cost of planting new trees by relocating existing trees
- Provide instant shade on houses, decks, patios, etc.

PRICING

- 6–12 inch caliper deciduous or evergreen trees supplied & installed with 90" spade @ \$1800-\$2800 each
- 4–6 inch caliper deciduous or evergreen trees supplied & installed with 55" spade @ \$1000-\$1800 each
- 90" spade transplanting trees @ \$300 per hour, port-to-port, with \$800 minimum per job
- 55" spade transplanting trees @ \$275 per hour, port-to-port, with \$600 minimum per job



Check out our tree spade videos on YouTube

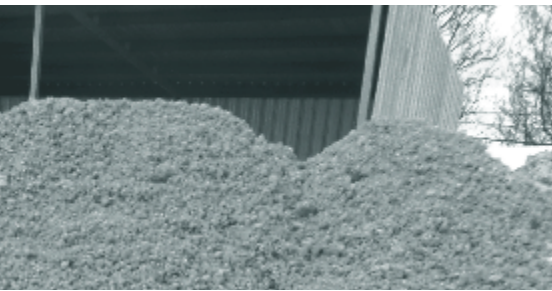
SALT & SNOW REMOVAL

SALT & SNOW REMOVAL

When the grim-faced TV meteorologist predicts a howling blast of the White Death, think Evans salt and snow removal. Aside from stocking up on milk and bread, nothing gets you through a Cincinnati winter better than knowing Evans is ready for your snow emergency.

Need a bag of salt? We've got what you need, and we're ready long before the winter storms appear. Need a ton or two? Give us a call and we'll make sure you're covered. Need your parking lot plowed so your employees have no excuse for not showing up? Evans has a fleet of plows ready to transform fields of white into acres of parking. Winter in Cincinnati... we're in it together, we'll survive it together.

Questions - call Jake Meagher at (513) 623-1030.



Salt & Deicer

Salt for Driveways and Roadways
Prices based on local availability.
Price Subject to Change.

50 lb. bag	\$ 7
Bulk, per ton	\$ 130

Deicer
Recommended for concrete
sidewalks/driveways

50 lb. bag	\$ 20
Magnesium or Calcium Chloride	



FIREWOOD & FIREPLACES

SEASONED & SPLIT FIREWOOD

(4' x 8' x 16" stacked)

Stack amount	Cord amount	Price
1 stack	1/3 cord	\$ 135
1 ton	1/2 cord	\$ 125
Stacking fee	per stack	\$ 75

Stay warm and cozy in front of a roaring fire all winter with Evans' Four Seasons Firewood Delivery Service.

We'll handle the hard work of splitting, prepping and delivery, and you can enjoy the benefits of a glowing fire on cold winter nights. Order early so you're ready for that first frosty night. We'll deliver our high quality, clean wood bundles for your fireplace, backyard fire pit, bonfire, barbecue or campfire.

Our firewood bundles are packaged in a convenient size that moves easily from your

yard or porch to the fireplace or into the back of a truck for a midwinter camping trip.

Evans Firewood is a mix of hardwoods and comes seasoned and split. A stack is 4' x 8' x 16".

You can also purchase our seasoned firewood by the ton for \$125 per ton. There is a one-ton minimum. A single axle truck can hold approximately 3 – 5 tons of firewood. One ton of firewood stacks out to approximately 4' x 8' x 16". Let us stack your wood for \$75 per stack. Delivery charges may apply.



OUTDOOR FIREPLACES

Heat up your outdoor living space with an economical new fireplace that can be installed in a day, rather than weeks. Evans Stoneworks has developed a prefabricated shell made up of masonry units that fit together on site. The outside of the unit is then customized to coordinate with the style of the space, using stone, brick, or stucco. Evans Stoneworks also creates beautiful custom fireplaces to create an outdoor living space that you will enjoy for years to come.



4270 ROUND BOTTOM RD • CINCINNATI • 513-271-RENT

ROUND BOTTOM RENTAL & SALES IS DEDICATED TO PROVIDING OUR CUSTOMERS WITH THE TOOLS AND EQUIPMENT THEY NEED FOR THEIR BUSINESS OR PROJECT.

We rent out everything from hand-held tools to chainsaws to bobcats, as well as heavy-duty machinery such as large CAT excavators and bulldozers. We are also an authorized dealer of Husqvarna equipment, Sno-way plows and salt spreaders, SnowEx salt spreaders and Wright mowers.

From rentals to parts to service, Round Bottom Rental has you covered.

RENTALS | EQUIPMENT | SERVICE | PROPANE TANKS FILLED





EQUIPMENT RENTALS



Prices are per hour with a four-hour minimum, (with Evans operator). Truck rates are charged from port-to-port and include Evans drivers. Equipment rates with experienced Evans operator are charged for on-site time with an additional mobilization fee. Equipment rental is subject to 20% surcharge for weekend rental.

TRUCKS, TRAILERS AND DUMPS

<i>(Approximate amount truck hauls)</i>	Per Hour w/ Operator
One ton (4 - 5 tons)	\$70
Single axle (8 - 10 tons)	\$75
Tri-axles (14 - 16 tons)	\$85
Multi-axle / 5+ Axle (20 - 22 tons)	\$95
Semi (tractor)	\$110
Dump trailer with tractor (23 - 25 tons)/flatbed	\$125
Walking floor trailer/35 ton drag with truck	\$150
Snow plow with pickup truck	\$150
Snow plow with 4x4, one-ton truck or single axle	\$165
CAT Off-Road Truck, 6-wheel drive Rubber track off-road truck (12 ton)	\$190
Slinger truck (18 - 20 tons) Multi-Axle	\$130
Slinger truck (8 - 10 tons, smaller slinger) Single-Axle	\$110
Flatbed with forklift	\$130
Tree spade truck, 90" with driver and helper OR Express Blower	\$300
Roll-off truck, single axle	\$100
Roll-off truck, quad-axle	\$125
Sweeper truck	\$150
Terex Stinger Boom Truck (47,000 lb., 101ft.)	\$250
Hydroseeder (4,000 & 3,000 gal)	\$225
Hydroseeder (1,800 gal)	\$175
Hydroseeder / CAT 55 challenger on Rubber Tracks	\$225



EQUIPMENT RENTALS



This pricing is for base rental charge only. Other fees and charges may apply and will be calculated at the time of rental. You must provide proof of renter damage and liability coverage. Does not include fuel usage or delivery fees. Daily, weekly, and monthly rental does NOT include operator.

SKIDSTEER MINI LOADERS	Daily <i>(8 hrs)</i>	Weekly <i>(40 hrs)</i>	4-week <i>(160 hrs)</i>
Bobcat MT55	\$150	\$ 500	\$ 1,500
Ditch Witch SK600	\$ 165	\$ 575	\$ 1,700
Ditch Witch SK800	\$ 175	\$ 650	\$ 2,000
Ditch Witch SK3000	\$ 350	\$ 1,200	\$ 3,500
CAT 236 D Rubber Tire	\$ 225	\$ 700	\$ 2,100
CAT 259 D or Kubota SVL75 Rubber Tracks	\$ 350	\$ 1,200	\$ 3,500
CAT 289 D or Kubota SVL90 Rubber Tracks	\$ 420	\$ 1,260	\$ 3,780

Rental includes bucket or pallet forks. Optional attachments: grapple buckets, angle brooms, pick-up brooms, tiller, augers, concrete bucket, breaker hammer, fecon grinder, soil conditioner, stump grinder or tree spade.

MINI EXCAVATORS			
Can dig approximately 8-12' deep with rubber tracks & blade, 12", 18", 24" tooth buckets, & 36" smooth grading buckets.			
Kubota KX008 Rubber Tracks	\$ 200	\$ 600	\$ 1,800
CAT 301.7D Rubber Tracks	\$ 220	\$ 750	\$ 2,250
CAT 303.5E or Kubota U35 Rubber Tracks	\$ 260	\$ 825	\$ 2,400
CAT 305.5E or Kubota KX040 Rubber Tracks	\$ 330	\$ 1,100	\$ 3,300

Rental includes mechanical quick coupler, 2' tooth bucket, 36" smooth grading bucket. Optional attachment: 12" trenching bucket.

BACKHOES AND EXCAVATORS			
CAT 420XE with Breaker	\$ 400	\$ 1,200	\$ 3,600
CAT 420FIT	\$ 375	\$ 1,200	\$ 3,600
CAT 308 or Kubota KX080 with Rubber Tracks	\$ 475	\$ 1,425	\$ 4,200
CAT 315CL w/ Bucket and Thumb	\$ 625	\$ 1,800	\$ 5,400
CAT 320DL w/ Bucket	\$ 785	\$ 2,355	\$ 7,065
CAT 322 CL Long Reach	\$ 1,500	\$ 4,500	\$ 13,500
CAT 330DL w/ Bucket and Thumb	\$ 1,400	\$ 4,200	\$ 12,600
CAT 330BL w/Concrete Hammer or Cruncher	\$3,100	\$ 9,300	\$ 27,900
CAT 336E w/ Bucket and Thumb	\$ 1,400	\$ 4,200	\$ 12,600
CAT 345DL w/Bucket and Thumb	\$ 1,775	\$ 5,700	\$ 15,000
KOMATSU PC 600	\$3,200	\$6,600	\$ 19,800

Available attachments: Buckets, grapples, breaker hammers, multi-processors, mechanical densifiers, compactor wheels, hydraulic plates, concrete slab buckets, or fecon grinder.

DOZERS			
CAT D-3 with 6 Way Blade	\$ 500	\$ 1,500	\$4,500
CAT D-4 with 6 Way Blade	\$ 500	\$ 1,500	\$ 4,500
CAT D5G XL or D5M LGP with 6-Way Blade	\$ 600	\$ 1,800	\$ 5,400
CAT D-6N with 6 Way Blade	\$ 900	\$ 2,700	\$ 8,100
CAT D6T	\$ 1,200	\$ 3,600	\$ 10,800
CAT D6K LGP or CAT 6T LGP <i>(with optional TOPCON 3D MC2 GPS)</i>	\$ 900	\$ 2,800	\$ 8,100
CAT D8R	\$ 2,000	\$ 6,000	\$ 18,000





EQUIPMENT RENTALS



ULTRA HIGH DEMOLITION EXCAVATORS

	Daily (8 hrs)	Weekly (40 hrs)	4-week (160 hrs)
CAT 330 D 75' reach	\$ 2,400	\$ 7,200	\$ 21,600
CAT 345 C 95' reach	\$ 3,600	\$ 10,800	\$ 32,500

WHEEL LOADERS/ TRACK LOADERS

YANMAR V8	\$ 300	\$ 900	\$ 2,700
CAT 924K (2-5 yd. bucket) Wheel	\$ 700	\$ 2,100	\$ 6,000
CAT 928G (3-5 yd. bucket) Wheel	\$ 750	\$ 2,100	\$ 6,000
CAT 980 G (15 yd. bucket) Wheel	\$ 1,100	\$ 3,300	\$ 9,900
CAT 953 D (3-4 yd. bucket) Track	\$ 1,100	\$ 3,000	\$ 9,900
CAT 963 C (3-5 yd. bucket) Track	\$ 1,100	\$ 3,000	\$ 9,900

COMPACTORS/ROLLERS

CAT 214 E Small Double Drum Roller	\$ 275	\$ 825	\$ 2,475
CAT CB-24B Smooth Double Drum	\$ 275	\$ 825	\$ 2,475
CAT 433 E Smooth Drum or Sheepfoot	\$ 450	\$ 1,500	\$ 4,500
CAT 563 D Smooth Drum or Sheepfoot	\$ 500	\$ 1,500	\$ 4,500

OFF-ROAD TRUCKS

CAT 725 or 730	\$ 1,800	\$ 2,850	\$ 8,300
CAT 740	\$ 1,800	\$ 2,850	\$ 8,300
Hydrema 912HM	\$ 700	\$ 2,100	\$ 6,300
KOMATSU CD 110R Rubber Tracks	\$ 1,500	\$ 4,500	\$ 13,500
MOROOKA MST 2200VD Rubber Tracks	\$ 1,500	\$ 4,500	\$ 13,500

TRACTORS

CAT Challenger 35, 45, 55 <i>w/ optional attachments: Northwest Tillers and Rome Construction Discs</i>	\$ 900	\$ 3,600	\$ 10,800
KUBOTA BX2670 w/ belly mower, Loader 4x4	\$ 200	\$ 600	\$ 1,800
KUBOTA MX 5100 w/ loader 4x4	\$ 275	\$ 900	\$ 2,700
KUBOTA M108S w/ boom	\$ 850	\$ 2,700	\$ 7,000
KUBOTA M5-111D	\$ 600	\$ 1,800	\$ 5,000
KUBOTA 9540 4x4 w/ cab <i>w/ optional attachments: Grader Boxes and Bush Hogs</i>	\$ 550	\$ 1,650	\$ 5,000
KUBOTA M7-171 4x4 w/cab, w/loader	\$ 900	\$ 3,600	\$ 10,800

MOTOR GRADER

John Deere 772CH <i>w/ Topcon 3D MC2 GPS</i>	\$ 1,250	\$3,750	\$ 11,250
CAT SS-250 Soil Stabilizer (w/ operator)	\$ 2,000	Call	Call



EQUIPMENT RENTALS

HYDRO-SEEDERS/STRAW BLOWER

	Daily (8 hrs)	Weekly (40 hrs)	4-week (160 hrs)
Hydro-Seeder – Pull Behind Trailer <i>(1200 Gal)</i>	\$ 500	\$ 1,500	\$ 4,500
Hydro-Seeder Truck w/ operator <i>(3000 gal, 200 ft. hose) Port to Port</i>	\$ 1,600	Call	Call
Hydro-Seeder Truck w/ operator <i>(1800 gal, 200 ft. hose) Port to Port</i>	\$ 1,400	Call	Call
Hydro-Seeder on CAT 55 Challenger with Rubber Tracks <i>(200 ft. hose)</i>	\$ 1,550	\$ 5,450	\$ 16,000
Finn B70 Straw Blower <i>(Pull Behind)</i>	\$ 160	\$550	\$ 1,600

MAN/BOOM LIFTS/TELEHANDLER

Telehandler Gehl RS 5-19 5000 w/ Forks & Bucket	\$ 300	\$ 1,000	\$ 3,000
Telehandler CAT 1255 w/ Forks & Bucket	\$ 500	\$ 1,650	\$ 4,500
Boomlift Genie Z45/25J w/ jib	\$ 325	\$ 1,000	\$ 3,000
Boomlift Genie 62/40 w/ jib	\$ 425	\$ 1,275	\$ 3,825
Boomlift Genie SZ-125C w/ jib	\$ 1,250	\$ 3,750	\$ 11,250
Terex Stinger 4792 Boom Truck Crane <i>(47,000 lbs, 101 ft. Max Sheave Height, w/ operator, Port to Port Fully 4-section Telescopic Keel Boom)</i>	\$ 1,600	Call	Call

FIREWOOD PROCESSOR ATTACHMENT

Will Cut and Split 3-4 Cords Per Hour, without skid steer	\$ 300	\$ 1,200	\$ 3,600
--	--------	----------	----------

WATER TRUCKS

Peterbilt 4,000 Gallon	\$ 800	\$ 2,075	\$ 5,200
------------------------	--------	----------	----------

BROOMS

Pelican Sweeper Truck w/ operator	\$ 900	Call	Call
-----------------------------------	--------	------	------



HYDROSEEDING

After clearing the land, we often follow with efficient, erosion control, professional hydroseeding – making sure the new site comes up lush and green.





EQUIPMENT RENTALS



Operators available at extra charge.

MISCELLANEOUS EQUIPMENT

	Daily (8 hrs)	Weekly (40 hrs)	4-week (160 hrs)
Wrecking Balls 2,200 - 3,600 lbs.	\$ 100	\$ 375	\$ 1,050
Conex Office Job Boxes 20' (Transport not included)	–	\$ 500	\$ 1,500
Conex Office Job Boxes 40' (Transport not included)	–	\$ 900	\$ 2,700
Bedding Boxes 7 - 9 c.y.	\$ 105	\$ 375	\$ 1,050
Concrete Crane Buckets 1 + 1.5 c.y.	\$ 105	\$ 375	\$ 1,050
Peterson 1000 HP Horizontal Grinder On Tracks	Call For Pricing		
Service Truck Fully Equipped With Mechanic (Port to Port)	\$125 (Hourly With Operator)		
Light Plant Diesel (Four 1000-Watt Bulbs)	\$ 105	\$ 350	\$ 1,100
Sullair 185 Pull Behind Air Compressor	\$105	\$350	\$ 1,100
Terex Portable, Large, Impact Crusher On Tracks	Call For Pricing		
Dutchman Tree Spade 36" w/Skid Steer Loader	\$ 850	\$ 2,500	\$ 7,450
Dutchman Tree Spade 50" w/Skid Steer Loader	\$ 920	\$ 2,760	\$8,280
Arrow Board	\$ 70	\$ 210	\$ 600



Start Your Evans Career

- 1. Competitive Wages
- 2. Paid Vacation & Holidays
- 3. Health Insurance w/ HSA option
- 4. 401k Retirement Plan w/ Match
- 5. Dental, Vision, & Life Insurance
- 6. Employee Discounts
- 7. Overtime Available
- 8. Home Every Night/Housing Available
- 9. Full-time or Part-time

For more information visit:
www.EvansLandscaping.com



- Some of the available opportunities
- 1. Landscaping
 - 2. Trucking
 - 3. Mechanics
 - 4. Equipment Operation
 - 5. Gravel Mining
 - 6. So Much More!

PRODUCING & MANUFACTURING Natural Stone



www.evansstoneworks.com • (513) 271-1119



8361 BROADWELL RD • CINCINNATI, 45244





NATURAL WALL AND PATIO BUILDING STONE

Sold per ton, unless noted	Palletized Wall Stone	Palletized 8" Cut Wall Stone	Palletized Stepping Stones	Palletized Flagstone	Palletized Slabs/ Outcroppings
Highland Buff	\$ 310	\$ 361	\$ 361		\$ 275
Lynchburg	\$ 310	\$ 361	\$ 361		\$ 275
Indiana Gray	\$ 310	\$ 361	\$ 361		\$ 275
Indiana Buff	\$ 355	\$ 412	\$ 412		\$ 355
Field Stone	\$ 310	\$ 361	\$ 361		\$ 275
Ohio Blue	\$ 383		\$ 417	\$ 553	
Pennsylvania Blue				\$ 605	
Pennsylvania Lilac	\$ 453			\$ 625	
Pennsylvania Field	\$ 453				
Wisconsin Chilton		\$ 425	\$ 450	\$ 675	
Wisconsin Fond Du Lac		\$ 425	\$ 450	\$ 675	
Tennessee Crab Orchard		\$ 425	\$ 450	\$ 450	
Tennessee Gray		\$ 425	\$ 450	\$ 450	

All palletized products are sold per ton. Each pallet weighs approximately 1 to 1 ½ tons. Coverage varies for each type of stone. A deposit is required for all pallets.

Tumbled Dimensional Retaining Wall Stone

Guillotine split pieces 8" depth vary in length, sawn top and bottom and tumbled. Palletized in 3", 6" or 9" per thickness. Please specify. 1.5 tons per pallet. Coverage per ton approximately 25 sq. ft.

Indiana Gray	\$487.00 per ton
Indiana Buff	\$558.00 per ton
Kentucky Fieldstone	\$487.00 per ton

CUT STEPS

	3' x 18" x 6" each	4' x 18" x 6" each
Indiana Gray*	\$ 225	\$ 240
Indiana Buff	\$ 295	\$ 325
Kentucky Fieldstone	\$ 225	\$ 240
Wisconsin Chilton	\$ 275	\$ 325
Wisconsin Fond Du Lac	\$ 275	\$ 325
Tennessee Crab Orchard	\$ 225	\$ 240
Tennessee Gray	\$ 225	\$ 240

*Indiana Gray also available in 5' and 6' cut steps. Please call for pricing.



PALLETIZED LANDSCAPE

Boulders	(sold per lb.)
“One-man boulders”	
River Jax	\$0.32
Tennessee River Rounds	\$0.42
Ohio Creekstone Flats	\$0.32
Granite Boulders	\$0.42

Call for quantity discounts.

PATTERNED FLAGSTONE

Pennsylvania Bluestone**	\$9.25 sq. ft.
--------------------------	----------------



NATURAL BUILDING STONE MATERIALS

Building Stone	Full Veneer per ton	Thin Veneer Flats	Thin Veneer Corners
Fieldstone**	\$ 324	\$ 15 sq. ft.	\$ 19 ln. ft.
Ohio Blue**		\$ 18 sq. ft.	\$ 23 ln. ft.
Highland**	\$ 324	\$15 sq. ft.	\$ 19 ln. ft.
Indiana Gray**	\$ 324	\$ 15 sq. ft.	\$ 19 ln. ft.
Indiana Buff**	\$ 370	\$ 18 sq. ft.	\$ 22 ln. ft.

Other veneer products available upon request. Call for pricing.
** Product available at Newtown store only.

LANDSCAPE ACCENTS

Granite Cobblestones		(sold per each)
Squares (4.5" x 4.5")	Black	\$ 6 ea.
	Gray	\$ 4 ea.
	Pink (while supplies last)	\$ 6 ea.
Rectangles (4.5" x 4.5" x 9")	Black	\$ 9 ea.
	Gray	\$ 7 ea.
	Pink	\$ 8 ea.
Jumbo (10.5" x 7.5" x 4")	Gray	\$ 8 ea.
Old Granite Cobblestones	Square	\$ 4 ea.
	Rectangle	\$ 7 ea.
Indiana Buff (while supplies last)	Square*	\$ 5 ea.
	Rectangle	\$ 6 ea.
Indiana Gray	Square*	\$ 474/ton \$ 5 ea.
	Rectangle*	\$ 453/ton \$ 6 ea.
Kentucky Fieldstone	Square*	\$ 474/ton \$ 5 ea.
Brown/Blue Mix	Rectangle*	\$ 353/ton \$ 6 ea.

*Sold by ton; full pallet only.

USED BRICK

Full Pallet, each brick: \$ 1.25
10 Full Pallets or more: \$1.00



SPECIAL OFFERS



<p>10% OFF</p> <p>EQUIPMENT RENTAL</p> <p>Not valid with any other coupon or previous purchase. Limit one coupon per offer. Retail coupon. Expires 12/31/2021</p> 	<p>\$100 OFF</p> <p>HUSQVARNA TRACTORS & ZERO TURN MOWERS</p> <p>(In-stock unit only)</p> <p>Not valid with any other coupon or previous purchase. Limit one coupon per offer. Retail coupon. Expires 12/31/2021</p> 
<p>10% OFF</p> <p>MOWER SERVICE</p> <p>Not valid with any other coupon or previous purchase. Limit one coupon per offer. Retail coupon. Expires 12/31/2021</p> 	<p>10% OFF</p> <p>MOWER PICK-UP & DELIVERY</p> <p>Not valid with any other coupon or previous purchase. Limit one coupon per offer. Retail coupon. Expires 12/31/2021</p> 



SPECIAL OFFERS



<p>\$75 OFF</p> <p>Express Blower, Treespade or Bobcat Service</p> <p>Coupon must be presented when placing order! Coupon good 4/1/2021-12/31/2021. Not valid with any other coupon or previous purchase. Limit one coupon with this offer.</p>  <p>PR50TS</p>	<p>\$40 OFF</p> <p>Slinger Truck Delivery or Roll-Off Recycling Box</p> <p>Coupon must be presented when placing order! Coupon good 4/1/2021-12/31/2021. Not valid with any other coupon or previous purchase. Limit one coupon with this offer.</p>  <p>PR35SR</p>	<p>\$35 OFF</p> <p>Delivery of 20 Yards or More of Topsoil</p> <p>Coupon must be presented when placing order! Coupon good 4/1/2021-12/31/2021. Not valid with any other coupon or previous purchase. Limit one coupon with this offer.</p>  <p>PR35T</p>
<p>\$20 OFF</p> <p>Delivery</p> <p>Coupon must be presented when placing order! Coupon good 4/1/2021-12/31/2021. Not valid with any other coupon or previous purchase. Limit one coupon with this offer.</p>  <p>PR15D</p>	<p>\$20 OFF</p> <p>Any Bulk Topsoil or Supersoil Purchase</p> <p>Coupon must be presented when placing order! Coupon good 4/1/2021-12/31/2021. Not valid with any other coupon or previous purchase. Limit one coupon with this offer.</p>  <p>PR10T</p>	<p>\$15 OFF</p> <p>Any Gravel Delivery</p> <p>Coupon must be presented when placing order! Coupon good 4/1/2021-12/31/2021. Not valid with any other coupon or previous purchase. Limit one coupon with this offer.</p>  <p>PR10G</p>
<p>\$20 OFF</p> <p>Any Pallet of Flatrock</p> <p>Coupon must be presented when placing order! Coupon good 4/1/2021-12/31/2021. Not valid with any other coupon or previous purchase. Limit one coupon with this offer.</p>  <p>PR10R</p>	<p>FREE</p> <p>Buy 5 Bags (2 cu. ft.) of Dark Supreme Mulch, Get One Bag FREE</p> <p>Coupon must be presented when placing order! Coupon good 4/1/2021-12/31/2021. Not valid with any other coupon or previous purchase. Limit one coupon with this offer.</p>  <p>PR5B</p>	<p>FREE</p> <p>Buy 4 Yards of Dark Supreme Mulch, Get One Yard FREE</p> <p>Coupon must be presented when placing order! Coupon good 4/1/2021-12/31/2021. Not valid with any other coupon or previous purchase. Limit one coupon with this offer.</p>  <p>PR1F</p>

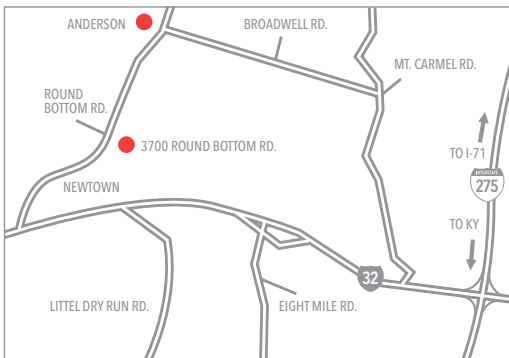




4229 Round Bottom Road
Cincinnati, Ohio 45244

DOING THE DIRTY WORK SINCE 1975.

LANDSCAPING | SUPPLIES | SITE DEVELOPMENT | TOPSOIL | MULCH | DEMOLITION | RECYCLING



NEWTOWN, OHIO

3700 Round Bottom Rd.

(513) 271-1119

Fax (513) 271-1055

Hours:

Mon. – Fri. 7am – 5pm

Sat. 7am – 3pm

Sun. 10am – 3pm

ANDERSON, OHIO

4229 Round Bottom Rd.

(513) 271-1119

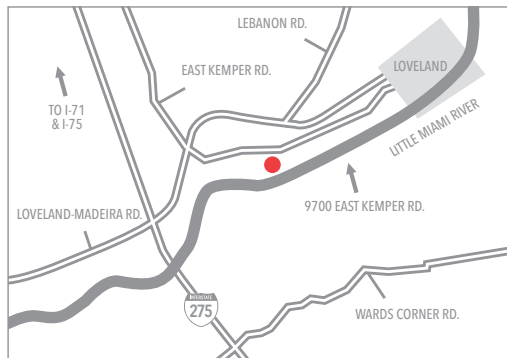
Fax (513) 272-5165

Hours:

Mon. – Fri. 7am – 5pm

Sat. 7am – 12pm

Sun: CLOSED



LOVELAND, OHIO

9700 East Kemper Rd.

(513) 271-1119

Fax (513) 683-8891

Hours:

Mon. – Fri. 8am – 5pm

Sat. 8am – 3pm

Sun. 10am – 3pm



We deliver to all of Ohio, Kentucky
and Indiana. Call for a quote.

Seasonal Hours Are Subject to Change

Find us on   

Connect with us for exclusive offers and landscaping tips.

 @EvansLandscaping

 @Evans_Group

 @Evans_Group

www.EvansLandscaping.com

Spring Through Fall Extended Hours Available - Please Call